

DISCLAIMERS

Non-Discrimination

New London Adult & Continuing Education is committed to a policy of equal opportunity/affirmative action for all qualified persons and does not discriminate in any employment practice, education program, or educational activity on the basis of race, color, national origin, sex, disability, age, religion or any other basis prohibited by Connecticut state and/or federal non-discrimination laws. Inquiries regarding the New London Adult & Continuing Education non-discrimination policies should be directed to Denise Spellman (860)-437-2385.

General Accessibility and Accommodations

All activities offered by New London Adult & Continuing Education are held in accessible locations. Accommodations for individuals with a disability are available upon request. Printed materials (e.g. brochure/handbook/newsletter) are available in alternate formats (e.g. large print, audio, Braille) upon request. For assistance, please contact Karen O'Connell at (860)437-2385.

General Educational Development (GED) Test Accommodations

Accommodations on the GED tests are available for qualified individuals with a disability. For more information, contact Karen O'Connell at (860) 437-2385. You may also contact Sabrina Mancini at the Connecticut State Department of Education at (860) 807-2110.

No Charge for Materials for Mandated Courses

New London Adult & Continuing Education is in compliance with Connecticut General Statutes Sec.10-73a and does not charge fees for registration, textbooks or materials used in mandated program areas.

The Board of Education, during the course of any given year, puts on a number of programs utilizing certified teachers, professionals, and local community residents who have special expertise in the areas in which they offer instruction. The Board of Education makes every effort to provide quality instruction in an appropriate atmosphere for all participants in any of its programs. The Board of Education, however, is not responsible nor takes any responsibility for the specific instruction in any particular course or any specific reliance upon such instruction made by an individual. Questions about course content, the educational experience of instructors, or other specifics regarding any particular course should be addressed to the specific instructor or the administrator charged with the operation of the program.

Visit our website: newlondonadulthood.org
for full course descriptions

Table of Contents

ADULT ED CLASSES

Adult High School Credit Diploma.....	2
Montville Adult Education Info	2
Waterford & Lyme-Old Lyme Info	2
Adult Basic Education (ABE)	3
General Educational Development (GED)	3
Groton Adult Education Info	3
Citizenship	4
English for Speakers of Other Languages	4
Family Literacy	5
JET	5
Transitions	5
Digital Literacy	5
I-BEST	6-7

ENRICHMENT CLASSES

Career Development.....	8-10
Arts, Crafts, & Hobbies	11-14
Outdoor Activities	15
Finance.....	16
Technology.....	16
Photography	17
Daytime Classes at NLAE.....	18
Music.....	19
Language	20-21
Pets.....	21
Personal Growth	21
Fitness & Health.....	22-24
Outdoor Sports	25
Ed2Go	24
Culinary.....	26-27

TRAVEL

Culture on Wheels.....	28-31
------------------------	-------

5 WAYS TO REGISTER FOR CLASSES & TRIPS

WEBSITE

newlondonadulthood.org
Visa, MasterCard, American Express or Discover

MAIL

Mail Registration Form with Visa, MasterCard, American Express, Discover information, check, or money order to:
New London Adult Education, Three Shaw's Cove, Suite 100,
New London, CT 06320 Attention: Peggy

IN PERSON

New London Adult & Continuing Education
Three Shaw's Cove, New London, CT
Monday-Friday, 8 am-4 pm & Monday-Thursday 6-8 pm
Visa, MasterCard, American Express, Discover, check,
money order or cash.

PHONE

(860)437-2385
Visa, MasterCard, American Express or Discover

FAX

(860)447-4025
Visa, MasterCard, American Express or Discover



Follow us on
Instagram



follow us on
facebook

Earn your New London Adult Education High School Diploma

The New London Board of Education has made available a New London Adult High School Diploma to residents who meet certain requirements. Day and evening classes are held at Three Shaw's Cove, from 8:30 a.m. to 3:00 p.m. and from 6:00 to 9:00 p.m.

• Individuals eligible for the program must be at least 17 years of age and officially withdrawn from school. (Students under the age of 18 must present a withdrawal document with a parental/guardian signature). This includes Adult High School Credit Diploma and GED students.

• To enroll in the Adult High School Credit Diploma program,

the student must reside in New London, Waterford, Montville, or Lyme-Old Lyme. All classes are free.

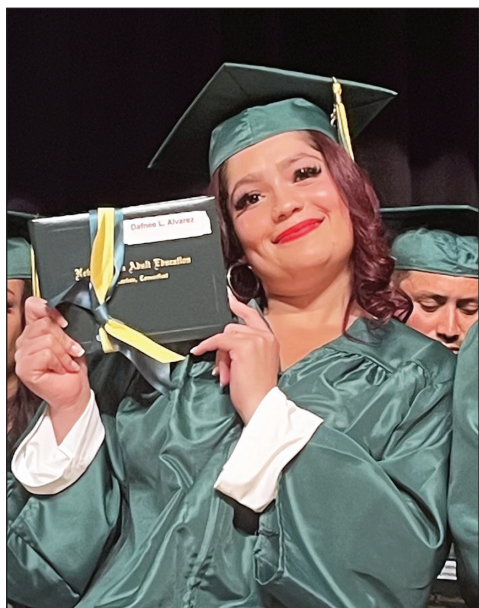
The program requires satisfactory completion of the following: 4 credits in English, 1 credit in Vocational Education, Art, and Technology, 4 credits in Mathematics, 3 credits in Science, 3 credits in Social Studies (1 credit must be in U.S. History and 0.5 credit in Government), and 10 elective credits.

Credits may also be awarded for documented work, occupational, volunteer, and military experiences.



Scan the QR Code to access more information on the High School Credit Diploma Program

Waterford and Lyme-Old Lyme programs offered in New London



Adult High School Credit Diploma • For information on credit classes available at New London Adult Education, please call Karen O'Connell at (860) 437-2385, ext. 109, for more information.

English for Speakers of Other Languages • We offer classes in several levels, i.e., Basic, Beginning, Intermediate, and Advanced. Students are pretested so that they are placed in the appropriate level.

General Educational Development (GED) • Instruction for the GED includes Reasoning through Language Arts, Mathematics, Science, and Social Studies.

All day and evening classes are held at Three Shaw's Cove, from 8:30 a.m. to 3:00 p.m. and from 6:00 to 9:00 p.m.

Registration & Testing Information • Registration for these classes can be done online at our website: newlondonadulthood.org.

Select Register under Adult Education Enrollment on the home screen and complete the form. Or in-house January 2 thru January 5 8:30 am - 2:30 pm or Evening Registration January 2 and 3 at 6:00 pm.

Seleccione registrarse en la pagina de Inscripción de Educación para Adultos en la pantalla de inicio y complete el formulario. También puede registrarse personalmente el 2 de enero al 5 de enero de 8:30 a.m. a 2:30 pm. ó en la tarde el día martes 2 y miércoles 3 de enero a las 6:00pm. Las clases comienzan el 9 de enero, 2024.

Montville Adult Education

For more information please contact **Annette Barber**, Adult Education Secretary, at (860) 848-8265 or email: abarber@montvilleschools.org

Academic Program Information • Programs at Montville Adult Education are designed to meet the needs of Montville adults desiring their high school diploma. Classes are offered in Math, English, Science, and History. All classes meet at Montville High School and are free. Contact the Program Director at (860) 848-8265. Your class schedule and courses will be tailored to your needs.

Adult High School Credit Diploma • Classes meet on Monday, Tuesday, and Wednesday. Classes are from 5:30 - 8:30 p.m. and run for sixteen (16) weeks.

General Information • Montville Adult Education is in a joint partnership with New London Adult Education.

Walk-in Registration & Placement Testing • Registration for the Spring Semester takes place at Montville Adult Ed on Wednesday, January 17 from 5:30 - 7:30pm. Classes begin Monday, January 22.



General Educational Development (GED) Information

The GED Test:

The GED Testing Service, in partnership with Pearson VUE, offers the GED examination as a computer-based test. The GED test is aligned to the Common Core State Standards (CCSS) and is designed to reflect the knowledge and skills that are needed for college and career success. New London Adult Education offers intensive instruction in English and Spanish to prepare students to meet the rigorous requirements of the GED test.

How to Register for the GED Test:

Visit www.GED.com to create an account. After creating an account, you must complete a paper registration at the Adult Education Office and receive approval for testing which is based in part upon official GED Practice test results. The exam is offered weekly in English and Spanish at the Adult Education Center, and students schedule themselves. A \$13 registration fee (payable at time of registration) is required for ALL registrants 21 years of age and older (no fee for veterans).



GED Test Eligibility Requirements:

- Minimum age is 17 years old and officially withdrawn from high school for at least 6 months.
- An official high school withdrawal document is needed for all 17- and 18-year-olds.
- All 17-year-olds need a withdrawal document with parental/guardian signature.
- Individuals aged 17-18 who are home schooled should request a "Home School Attestation" form signed by the GED Administrator at the CT State Department of Education email: ged@ct.gov or call (860) 807-2110.



Scan the QR Code for more information on the GED Test

Adult Basic Education

Adult Basic Education classes are for those who are working toward an Adult High School Credit Diploma or a GED.

These classes can help improve basic reading, writing, and math skills. Students may prepare for job advancement, vocational training programs, or high school completion classes, as well as develop greater self confidence and personal satisfaction. These FREE classes are offered days and evenings throughout the year.

Please call (860) 437-2385 for more information.



Scan the QR Code for more information on Adult Basic Education

Groton Adult Education

Adult High School Credit Diploma • Classes meet at Fitch High School, 101 Groton Long Point Rd, Groton. For information on credit classes available at Fitch High School, please call 860-441-2152. In-person registration for Fitch High School will be conducted Wednesday January 17 and Thursday January 18 5:00 to 7:00 pm at Fitch High School. Classes begin January 29.

English for Speakers of Other Languages • We offer classes in several levels, i.e., Basic, Beginning, Intermediate, and Advanced. Students are pre-tested so that they are placed in the appropriate level. Classes meet Monday & Tuesdays 5:30-8:00 pm at Fitch High School.

General Educational Development (GED) • Instruction for the GED includes Reasoning through Language Arts, Mathematics, Science, and Social Studies. Classes meet Monday, Tuesday 5:30-8:00 pm at Fitch High School.

Location for GED, ESL & ABE Classes • Classes meet at Fitch High School 101 Groton Long Point Rd, Groton, and/or New London Adult and Continuing Education, Three Shaw's Cove, New London. Classes begin January 8 at New London Adult Education.

Walk-in Registration & Placement Testing • Registration for the Spring Semester takes place at Fitch High School on Wednesday & Thursday January 17 & 18 from 5:00 to 7:00pm.

ESOL ~ English for Speakers of Other Languages: Classes begin January 8, 2024

English classes for those whose native language is not English have been provided by New London Adult Education since 1910, helping thousands of adults enter the mainstream of American life. These classes are available year-round and are offered FREE-of-charge. In person and online options available.

ESOL Class Schedule at New London Adult Education

Days • New London Adult Education, Three Shaw's
New London, CT 06320
(860) 437-2385
Monday–Friday • 9:00 am -12:00 pm



Nights • New London Adult Education
(860) 437-2385
Monday–Wednesday • 6:30 pm – 9:00 pm

ESOL Class Schedule at Fitch High School

Nights: • 101 Groton Long Point Rd , Groton, CT 06340
(860) 441-2152
Monday & Tuesday • 5:30 pm – 8:00 pm
Classes start January 5

FREE Childcare (New London Adult Education site only)

For children of students registered in GED, ESOL or High School Credit Classes. Children need to be at least 6-weeks old, supervised care will be provided at New London Adult Education by an experienced child care supervisor. All children must be registered. For more details, please call Laiza Melendez or Norma Velez at (860) 437-2385.

Inglés como segundo idioma para personas de distintos lenguajes: Comienzan el 8 de enero de 2024

Las clases de inglés como segundo idioma, para aquellas personas cuya lengua natal no es el inglés, han sido ofrecidas por el programa de Educación de Adultos en New London desde 1910, ayudando a miles de adultos a desarrollarse en el ambiente de la vida americana. Estas clases son ofrecidas todo el año y sin costo alguno. Opciones disponibles en persona y en línea.

Educación de Adultos en New London

Días • New London Adult Education
Three Shaw's Cove, New London, CT
(860) 437-2385
Lunes a Viernes • 9:00-12:00 pm

Noches • New London Adult Education
Lunes, martes y miércoles
6:30-9:00 pm

Clases de ESOL en Fitch High School

Noches: • 101 Groton Long Point Road
Groton, CT 06340
(860) 441-2152
Lunes & martes • 5:30 pm – 8:00 pm
Clases comienzan el 5 de enero de 2023

Cuidado de Niños Gratis (solamente en la escuela de Shaw's Cove, New London)

El programa de Educación de Adultos en New London ofrece cuidado de niños, para estudiantes registrados. Para más detalles llamar a Laiza Melendez ó Norma Velez al (860) 437-2385.

Citizenship Classes

This class is for students wishing to work toward becoming naturalized American citizens. The class helps students gain better understanding of the N-400 application, the interview process, U.S. history, and local, state and federal government. Lessons will stress the procedural steps necessary to become a U.S. citizen. Moderate proficiency in English is required.

To qualify for citizenship, you must:

- Be at least 18 years old and have been a permanent resident for the past 5 years with no special circumstances
- Be at least 18 years old and are currently married to and living with a U.S. citizen and have been married to and living with that same U.S. citizen for the past 3 years and your spouse has been a U.S. citizen for the past 3 years.

The class is held at New London Adult Education:

- Thursday 12:30 pm – 2:30 pm
- Thursday evenings 6:30 – 8:30 pm

Register now for Citizenship Preparation classes.



Scan the QR Code
for Information on
Citizenship classes



Escanee el código
QR para obtener más
información sobre las
clases de ESL

Transitions Program

The Transitions Program is available to all current GED, Credit Diploma and ESL students enrolled at New London Adult and Continuing Education. The Transitions Associate assists students with career planning, college and training information, college application completion, financial aid information, and FAFSA application completion. Students participate in college tours and are introduced to American Job Center resources.



Jobs, Education and Training

JET is an employment and training program for eligible out-of-school youths between the ages of 17-24. Funded by the Eastern CT Workforce Investment Board, the program is designed to assist eligible youth who want to move from high school dropout to high school graduate and/or to advance from unemployed or underemployed to gainfully employed and/or to enter college or training programs. Program components include career exploration and workforce training.

For additional information on JET, contact Lora Castronova at: (860) 437-2385, ext. 180 or email her at: LCastronova@tvcca.org

Digital Literacy



The Northstar Digital Literacy Program is incorporated into many of our mandated classes. Northstar defines the basic skills needed to perform computer and online tasks and each module assesses students' competency for each task. Individuals who receive a score of at least 85% on a proctored assessment may earn the Northstar Digital Literacy Certificate.



Family Literacy

Where parents and children learn together

The family literacy program includes four components: adult and parenting education, early childhood education, and interactive literacy activities for the parent and child. The adults attend ESL, high school completion, or GED classes with the focus on improving the skills necessary to lead to employment or post-secondary training.

The adults also participate in parenting education classes designed to assist them in becoming their child's first teacher.

The children engage in an age-appropriate, early learning program to prepare them for transition to kindergarten and future academic success. Literacy in the home is fostered through parent and child activities centered on children's books and the reinforcement of strategies introduced during parenting class.



Integrated Basic Education Skills Training (I-BEST)

Currently enrolled students may be eligible for the Integrated Basic Education and Skills Training (I-BEST) program which partners basic education and vocational training instructors in the delivery of a collaborative program of workplace contextualized learning. Through a team-teaching approach, instructors build a classroom environment that provides maximum support for student success.

These trainings, which allow students to explore possible career pathways, focus on a variety of industry clusters and include employability skills. Students can train for a career or higher paying job but can continue to work on their math, reading, high school diploma or English skills at the same time. Students get the help they need while studying in the career field of their choice; they learn by doing!

The I-BEST program is only open to students currently enrolled in the GED, High School Credit Diploma or ESL classes at New London Adult Education.

Intro to Basic Auto Technician Training

This training program is designed to prepare students for an entry-level automotive technician position. Students will learn safety in an auto repair shop, along with the ability to perform a basic tune-up service. The training will include a basic skills component. Upon successful completion of the course, students will obtain an Introduction to Basic Auto Technician Training certificate.



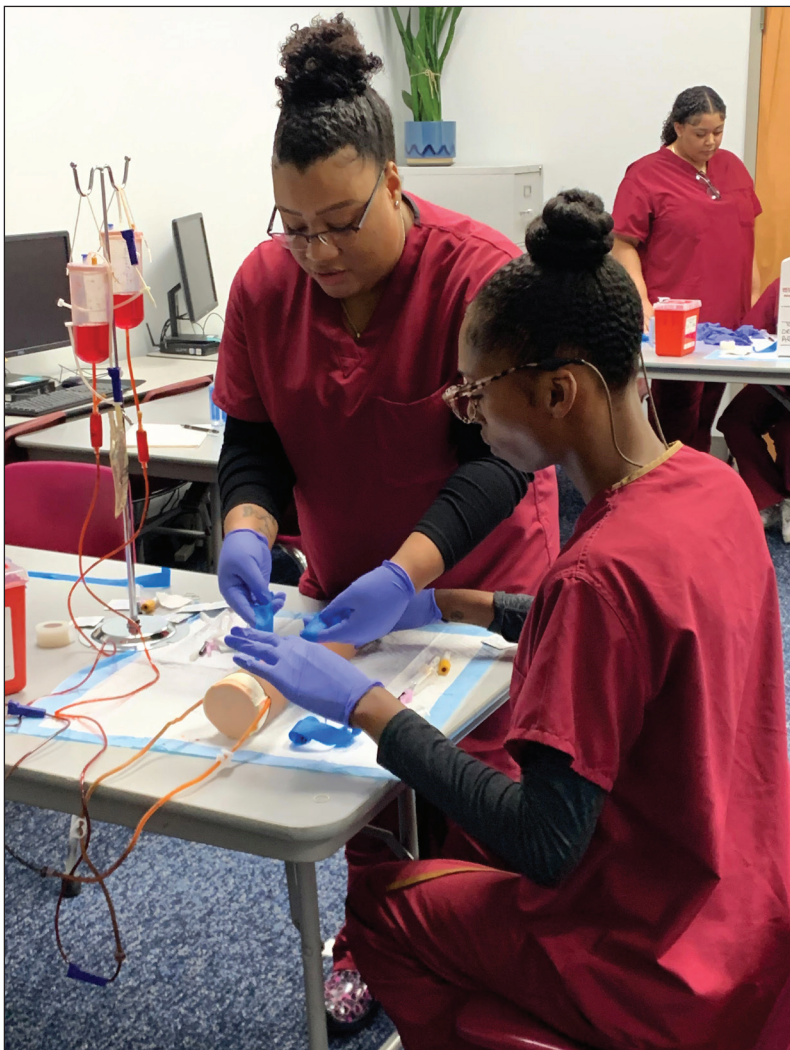
Certified Nursing Assistant

The Certified Nursing Assistant program will provide students with basic nursing skills, and classroom and clinical training which includes medical terminology. The program offers the opportunity to receive real life-based experience and practical training. Clinical training is completed in the state-of-the-art lab/classroom at New London Adult Education and a local nursing facility. The training course will include a basic skills education component. Upon successful completion of the course, students will take the State of Connecticut exam for CNA certification.

For additional information on any of these programs, please contact Sara Weeks at (860) 437-2385 VM 169

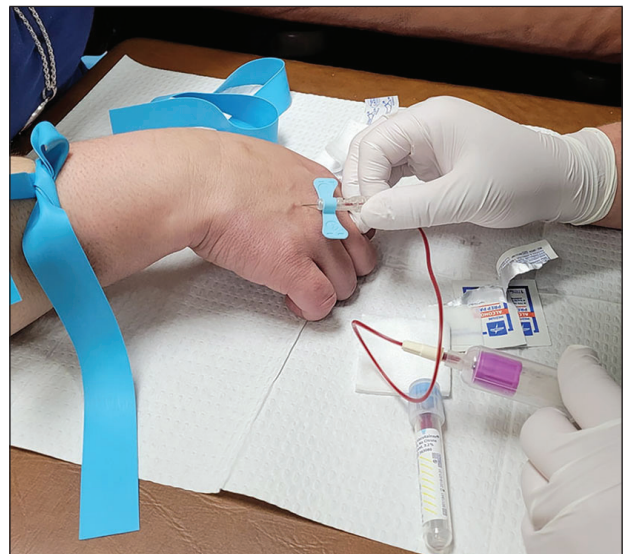
Introduction to Server and Culinary Arts with Food Handlers Certificate

Students will be trained in basic food service, which includes food handling, nutrition, sanitation, and instruction in the art of cooking, including techniques such as sautéing, baking, and grilling. The training course will include a basic skills education component. The students will develop competencies for a career in food establishments. Those who successfully complete the course and pass the exam will receive a CAFE certificate from Ledge Light Health District.



Phlebotomy Certificate

This program prepares students to become Certified Phlebotomy Technicians. Students learn the components of blood, basic human anatomy, potential complications of a blood draw, proper drawing technique, and collection sequence. Training includes occupational-specific basic skills instruction. Program completion requires 30 successful venipuncture collections, and 10 capillary draws which will be performed in class on fellow students. Upon successful completion of the course, students will be eligible to earn the National Certification upon passing the NHA exam.



The I-BEST program is only open to students currently enrolled in GED, High School Credit Diploma or ESL classes.

Careers Begin at New London Adult Ed

100

Emergency Medical Technician Initial Basic Training

Classes are conducted **Monday & Thursday nights and Saturdays daytime**. This intensive program is designed to provide a basic understanding of anatomy, physiology, and pathophysiology. It will allow you to better understand signs, symptoms, and emergency care. An anatomical and body system approach to physical exams will link conditions to assessment findings. This course will give you knowledge of the presentation of common medical conditions and traumatic injuries encountered in the pre-hospital environment. You will learn how to provide the most efficient and effective emergency care. Graduates of this program will satisfy licensure requirements from the National Registry of Emergency Medical Technicians as well as the Connecticut Department of Public Health, Office of Emergency Medical Service. The textbook and NREMT Practical Exam are included in this course.



Prerequisites: Student must be 16 years of age prior to the end of the class. Proof of Tuberculosis (TB PPD) test results within 1 year from the end of the clinical end date, Measles, Mumps, Rubella (MMR), Varicella (Chicken Pox) Tetanus, Diphtheria, Pertussis (Tdap) and Hepatitis B (Hep B)

Begins Thursday 1/18 6:00-9:30 pm 14 weeks NREMT Practical Exam 4/20 NL Adult Education Resident/Non-resident \$1,200 WIOA Approved & approved for VA Educational Benefits Instructor: Emergency Training Services

100D

Emergency Medical Technician Initial Basic Training- Daytime

Begins Monday 6/17 8:00 am-3:00 pm 7 weeks NREMT Practical Exam 8/3 NL Adult Education Resident/Non-resident \$1,200 WIOA Approved & approved for VA Educational Benefits Instructor: Emergency Training Services



101 Phlebotomy

This flexible learning program will provide students the skills necessary to work as a Certified Phlebotomy Technician. Students will learn the components of blood, possible complications of a blood draw, along with some basic Human Anatomy, proper drawing technique, and collection sequence. In order to complete this class it is a requirement to obtain 30 successful

venipuncture collections and 10 capillary draws on living persons. These will be performed in class on fellow students and clinical volunteers. This is an 80 hour hybrid course with 70 hours of online learning and 10 hours of in person clinical. Upon successful completion of this course students will have the opportunity to obtain National Certification from the NHA if they successfully pass the exam.

Prerequisites: High School Diploma or GED, basic computer skills, and a working computer. Students will need to show proof of up to date COVID-19 vaccinations and booster shots. Equipment, Book, and Lab Fee, are included in the cost of tuition.



Mon 1/8 OnLine Portion / In person Classroom Mon - Fri 1/29 5:30-7:30 pm NL Adult Education or Mon 2/5 OnLine Portion / In person Classroom Mon - Fri 2/26 5:30-7:30 pm NL Adult Education or Mon 3/4 OnLine Portion / In person Classroom Mon - Fri 3/25 5:30-7:30 pm NL Adult Education or Mon 4/29 OnLine Portion / In person Classroom Mon - Fri 5/20 5:30-7:30 pm NL Adult Education or Mon 6/3 OnLine Portion / In person Classroom Mon - Fri 6/24 5:30-7:30 pm NL Adult Education or Mon 7/8 OnLine Portion / In person Classroom Mon - Fri 7/29 5:30-7:30 pm NL Adult Education or Mon 8/5 OnLine Portion / In person Classroom Mon - Fri 8/26 5:30-7:30 pm NL Adult Education Resident/Non-resident \$1599 WIOA Approved

102 Certified Nursing Assistant Training

Our CNA program will provide students with the required hours for Certified Nursing Assistant training, basic nurse aide skills, including classroom and clinical training. This program will prepare the students for the Prometric exam, which places successful candidates on the Connecticut Nurse Aide Registry.

Prerequisites: Prior to attending the class, the student must have the following: Proof of being 18 years or older prior to the practical application portion of the class, Social Security Number, current seasonal flu vaccine (Oct 1- Mar 30), COVID vaccine, clearance from Medical Doctor to be able to lift 50 pounds and proof of Negative TB results read within the last 6 months from the class begin date, and active email account. High School completion or equivalent may be required for employment in this field. (State of Connecticut requires 100 mandatory hours of training with instructor, additional hours if required will be charged separately at \$40 per hour in addition to tuition.) Any questions, please contact the instructor prior to class start.

Resident/Non-resident \$1,099 WIOA Approved & approved for VA Educational Benefits (Fee includes tuition, textbook, uniform, and State of CT Prometric exam) Instructor: Patricia Conklin, RN 1/8 - 3/2 Monday/Wednesday/Evening 5 pm – 9 pm and Saturday 8 am - 4 pm 8 weeks NL Adult Education



102D Certified Nursing Assistant Training- Daytime

5/29 - 6/14 - Monday thru Friday 8:00 am-4:00pm 6/17-7/3 - Monday thru Friday 8:00 am-4:00 pm
7/15-7/31 - Monday thru Friday 8:00 am-4:00 pm 2 1/2 weeks NL Adult Education
8/5 - 8/21 - Monday thru Friday 8:00 am-4:00 pm NL Adult Education



104 Voice-Over Training

Have you ever been told that you have a great voice? This exciting class will explore numerous aspects of voice-over work for television, film, radio, audio-books, documentaries and the Internet in your area. Students will have the opportunity to ask questions and hear examples of demos recorded by professional voice actors.



Monday 3/4 6:30-8:00 pm or Tuesday 4/23 6:30-8:00 pm 12 students maximum Live-Online class Resident \$29/Non-resident \$34

103 Connecticut Security Guard Card Training

Prepare for your Connecticut Security Officer Guard License. Upon successful completion of this course, you will be issued a training certificate required to accompany your licensure application, to the Connecticut Department of Emergency Services and Public Protection.

This dynamic course covers information about the Security Industry, how to be a Security Officer, and job exploration. Connecticut laws will be reviewed, pertaining to the security industry, self-defense and the use of force, and citizen's arrest. In addition, you will learn about the use of force continuum, fire safety, and the history of security, workplace violence, terrorism, communication skills, and more.

Saturday 4/13 8:00 am - 3:00 pm NL Adult Education Resident \$150/Non-resident \$155 Instructor: Louis J. Bonito



The Connecticut State Office of Higher Education has approved our Emergency Medical Technician, Real Estate Principles and Practices and Certified Nursing Assistant Programs for educational assistance benefits from the U.S. Department of Veterans Affairs.

CAREER TRAINING

105 Professional Bartending with SMART Certification

This professional bartending course includes the state and national SMART (Servers and Managers Alcohol Responsibility Training) certification recognized by the CT Department of Liquor Control and police departments. Servers of alcohol are taught to serve responsibly, how to spot signs of intoxication, and how to respond appropriately. Instruction focuses on opening and closing procedures, product knowledge, speed of preparation, and people skills. Upon successful completion of the course, students will be qualified to work in any environment that serves liquor, including restaurants, clubs, hotels, and catering companies. Students receive a certificate of completion and the SMART certification. Students must be 18 years old or older. No real alcohol is used.



Wednesday 4/17 6:00-9:00 pm 5 Weeks NL Adult Education
Resident \$250/Non-resident \$255 Instructor: Paul Rich

106 SMART Certification for Alcohol Servers

SMART training is a 3-hour certification course developed by those in the hospitality industry for the hospitality industry. Learn how to identify signs of intoxication using the traffic light system as well as learning CT's liquor rules, regulations, and laws. This course has an intense focus on checking IDs properly and identifying underage drinking.

Wednesday 4/17 6:00-9:00 pm One day only NL Adult Education
Resident \$55/Non-resident \$60 Instructor: Paul Rich

109 ServSafe

The ServSafe program was created by leaders in the Foodservice Industry to promote food safety. Ledge Light Health District which promotes healthy communities in all 90 establishments in New London County are requiring all food establishments to have all their Cooks, Chefs, Person in Charge (PIC) be ServSafe Certified.



In the competitive restaurant field, industry certifications can help you stand out among the crowd of applicants. The NRA's ServSafe Food Protection Manager Certification is nationally recognized. Cost includes Tuition, Book, Certificate and Exams with passing grade.

Tuesday 3/12 5:30-8:30 pm 4 classes Waterford HS
Resident \$195/Non-resident \$200
Instructor: Amarilys Saluk, CDM,CFPP

10 NEW LONDON ADULT EDUCATION

107 Real Estate Principles and Practices

This course covers the major aspects of the real estate industry and prepares you for the State licensing examination and meets the 60-hour requirement for licensing. It also provides excellent information for those interested in personal real estate planning and investing. Instructors from Cadema Education Associates will teach the latest and most relevant trends in real estate. To take the State licensing examination you must be 18 years of age or older. Textbooks/E-book are included in the cost of the class. Class meets Monday & Thursday evenings.



Monday 3/11 5:30-8:30 pm 11 weeks
NL Adult Education Instructor: Cadema Education Associates
Resident \$575/Non-resident \$580

107D Real Estate Principles and Practices-Daytime

Saturday 1/6 9:00 am - 3:00 pm 9 weeks NL Adult Education
Resident \$575/Non-resident \$580
Instructor: Cadema Education Associates

108 CPR with AED & Standard First Aid

This course will teach you how to recognize and treat life-threatening emergencies, cardiac arrest, and choking in adults, children, and infants. Defibrillator and infant training will also be taught. This program meets OSHA requirement standards for emergency care training in the workplace. A National Safety Council CPR and First Aid Certification will be presented upon completion of this course.

Tuesday 3/12 6:00-9:00 pm NL Adult Education 1 class
Resident \$84/Non-resident \$89
Instructor: Emergency Training Services

110 Español Serv-Safe

El programa Serv-Safe fue creado por líderes de la industria de alimentos para promover la seguridad alimentaria. El distrito Ledge Light Health que promueve comunidades saludables en los 90 establecimientos en el Condado de New London están requiriendo que todos los establecimientos de alimentos tengan todos sus cocineros, chefs, persona a cargo (PIC) sean ServSafe certificado. En el campo competitivo del restaurante, las certificaciones de la industria pueden ayudarle a destacar entre la muchedumbre de aspirantes. La certificación de ServSafe Food Protection Manager de la ANR es reconocida a nivel nacional. El costo incluye la matrícula, el libro, el certificado y los exámenes con paso de grado.

Saturday 2/10 8:00 am - 3:00 pm 1 class
NL Adult Education
Resident \$195/Non-resident \$200
Instructor: Amarilys Saluk, CDM,CFPP

Editor's Note: In order to make the locations of Enrichment Classes easier to find, we have incorporated a color-coded system to identify each school hosting classes.

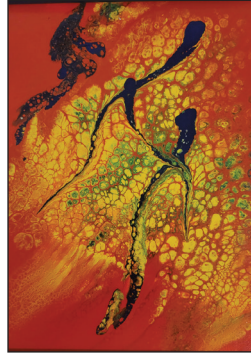
COLOR KEY

New London Adult Education
New London STMHS
Montville High School

Fitch High School
Waterford High School
Old Lyme Middle School

200 Intro to Acrylic Pouring

Receive instruction and learn techniques to discover your inner artist with this exciting medium! Using everyday items, you'll create wonderful, abstract artwork that you'll be proud to frame. Classes will include information on materials & products, paint delivery systems, and pouring techniques. You'll receive a kit including gloves, aprons, cups, mixing sticks, canvases, paints and required additives to produce and finish several, beautiful pieces of art! Everything is provided, including a way to transport your pieces home. Bring only your desire to learn something new and get creative!



Saturday 2/17 or 2/24 or 3/16 or 3/23 9:00 am-12:00 pm 1 class NL Adult Education Resident \$69/Non-resident \$74 Instructor: Nina Murphy

202 Drawing & Composition Workshops

This series of one-day workshops explore ways to create and refine your composition skills when designing your paintings and drawings. Each workshop addresses general principles of design and applies them to specific situations and challenges of various subject genres.

202A Composing Abstracts

Friday 1/19 10:00 am-3:00 pm 1 class NL Adult Education Resident \$54/Non-resident \$59 Instructor: Sue Cash

202B Composing Objects

Friday 2/9 10:00 am-3:00 pm 1 class NL Adult Education Resident \$54/Non-resident \$59 Instructor: Sue Cash

202C Composing Landscapes

Friday 3/8 10:00 am-3:00 pm 1 class NL Adult Education Resident \$54/Non-resident \$59 Instructor: Sue Cash

202D Composing Figures

Friday 4/5 10:00 am-3:00 pm 1 class NL Adult Education Resident \$54/Non-resident \$59 Instructor: Sue Cash

201 Figure Drawing Class

Learn the basics of human proportion, gesture and foreshortening, working with a clothed model. A \$15.00 fee is to be paid to the Instructor at the first class.

Monday 3/11 2:00-5:00 pm 3 classes NL Adult Education Resident \$94/Non-resident \$99 Instructor: Sue Cash

203 Perspective Challenge - A Intermediate Level

Explore theoretical perspective of extreme viewpoints, 3-point perspective and complex environments. Valuable for drawing from your imagination, illustrations, or comic-book style backgrounds. **Prior Experience Recommended**

Saturday 1/27 9:00 am - 1:00 pm 1 class NL Adult Education Resident \$44/Non-resident \$49 Instructor: Sue Cash

204 Perspective Challenges - B Intermediate Level

Explore complex perspective challenges such as oblique planes, multiple vanishing points, reflections and shadows when working from life. **Prior Experience Recommended**

Saturday 2/24 9:00 am - 1:00 pm 1 class NL Adult Education Resident \$44/Non-resident \$49 Instructor: Sue Cash

205 Painting Foundations - Beginner Level

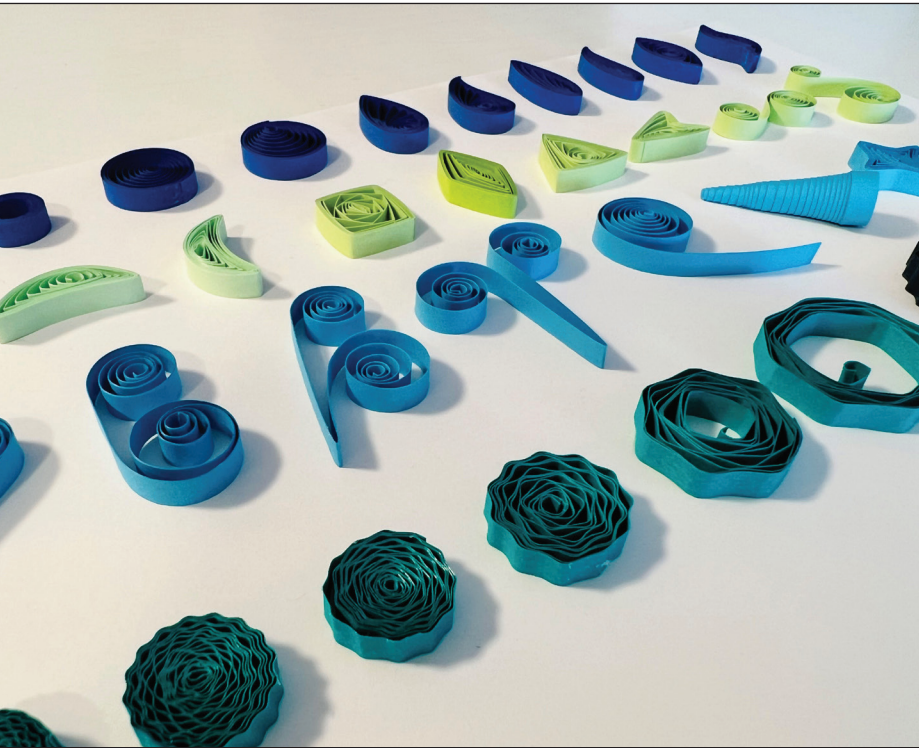
Learn the basics of oil or acrylic painting. Class covers materials, color theory, design, and painting process. Materials list online.

Wednesday 5/1 5:30 - 8:30 pm 5 classes NL Adult Education Resident \$144/Non-resident \$149 Instructor: Sue Cash

206 Finding Your Vision - Developing Personal Content in Your Art

A week-long intensive for painters in all media. Work on ways to develop your personal content, style, and point of view. Includes exercises, drawing, techniques and feedback aimed at completion of a final painting. **Prior experience recommended.**

Monday 6/24 9:30 am - 2:30 pm 5 classes NL Adult Education Resident \$249/Non-resident \$254 Instructor: Sue Cash



Learn the Ancient Art of Quilling

Learn the Ancient Art of Paper Quilling. Paper Quilling dates back to ancient Egyptian times, through the Renaissance and it made its way to America by the Pilgrims. Class includes hands on instruction, all paper supplies, classroom use of quilling tools, and a 5x7 shadow box frame for your artwork.

207 Valentines Day Heart

Saturday 2/10 10:00 am-12:30 pm 1 Class NL Adult Education
Resident \$55/Non-resident \$60 Instructor: Marcy Kaplan

208 Tulip Patch

Tuesday 3/12 6:00-8:30 1 Class Fitch HS
Resident \$55/Non-resident \$60 Instructor: Marcy Kaplan

209 30 Basic Quilling Shapes

Tuesday 6/4 10:00-12:30 pm 1 Class NL Adult Education
Resident \$55/Non-resident \$60 Instructor: Marcy Kaplan

210 Dandelion

Tuesday 6/11 10:00-12:30 pm Class NL Adult Education
Resident \$55/Non-resident \$60 Instructor: Marcy Kaplan

211 Butterfly

Tuesday 6/18 10:00-12:30 pm Class NL Adult Education
Resident \$55/Non-resident \$60 Instructor: Marcy Kaplan

212 Hanging Ocean Ornament

Tuesday 6/25 10:00-12:30 pm Class NL Adult Education
Resident \$55/Non-resident \$60 Instructor: Marcy Kaplan

213

The 4 Nobles of Sumi-ê Workshops

In China and Japan, bamboo, wild orchid, chrysanthemum and branches of the plum tree are referred to as the "Four Noble Gentlemen." Every class will teach a new stroke of the brush. Material included

213A Bamboo

Saturday 3/16 9:00-11:00 am 1 class NL Adult Education
Resident \$39/Non-resident \$44 Instructor: Silvana Ten

213B Wild Orchid

Saturday 3/23 9:00-11:00 am 1 class NL Adult Education
Resident \$39/Non-resident \$44 Instructor: Silvana Ten

213C Chrysanthemum

Saturday 3/30 9:00-11:00 am 1 class NL Adult Education
Resident \$39/Non-resident \$44 Instructor: Silvana Ten

213D Cherry Blossom

Saturday 4/6 9:00-11:00 am 1 class NL Adult Education
Resident \$39/Non-resident \$44 Instructor: Silvana Ten

214 Crochet

Crochet class for all, from Beginners to those who want to improve their skills. Take a class in crochet and learn basic crochet steps such as single, double & triple crochet. Choose to make a project such as a shawl, blanket, or afghan and more.



Material List: Acrylic or Wool yarn and USC6-4mm Crochet Needle or Cotton Thread and 2.7mm Crochet Needle. or yarn & needle of the students choice.

Saturday 1/13 11:30 am -1:30 pm 9 classes NL Adult Education
Resident \$104/Non-resident \$109 Instructor: Judy Telemaque

215 Watercolor for Relaxation

Take some time and relax learning the art of watercolor. Material list is available online & with registration.

Friday 3/15 1:00-3:00 pm 8 classes
NL Adult Education or
Tuesday 3/12 6:00-8:00 pm 8 classes
Waterford HS or
Thursday 3/14 6:00-8:00 pm
Old Lyme MS
Resident \$89/Non-resident \$94
Instructor: Silvana Ten





Chinese Watercolor Painting Workshops

Spend a Saturday and learn or sharpen your knowledge of the art of Chinese Watercolor Painting.

All classes require a \$5 material fee to Instructor Eva Leong.

216 Spring Flowers & Butterflies

Saturday 2/17 9:00 am – 2:30 pm

NL Adult Education

Resident \$84/Non-resident \$89

217 Summer Flowers & Birds

Saturday 3/23 9:00 am – 2:30 pm

NL Adult Education

Resident \$84/Non-resident \$89

218 Cats & Tree Flowers

Saturday 4/13 9:00 am – 2:30 pm

NL Adult Education

Resident \$84/Non-resident \$89



219 Sea Glass Art

Your class fee covers all the supplies to make a matted and framed 5x7 piece of seaglass art that you get to take home with you! You are NOT required to bring your own seaglass but feel free if you would like to add some pieces from your special collection! There are many dates to choose from, choose one or more:

Thursday 1/11 or 2/1 or 2/15 or 2/29 or 3/28 or 4/25 or 5/30 or Wed. 5/15 6:00-8:00 pm NL Adult Education

1 class Resident \$39/Non-resident \$44

Instructor: Stacy Madden

221 Goat Milk Soap

In this class, you will learn how to use goat milk or coconut milk to create a beautiful soap, and tips and tricks to ensure success. Suit up for safety by wearing long sleeve shirts, closed toes shoes and an apron. Supplies will be provided to make the soap, and there is a link to purchase the mold you will need. Material required: for the class - Tall Skinny Mini Mold from Micas and More.

<https://micasandmore.com/product/s-tsmi/>

Please come with a bag to take your project home.

Saturday 4/20 8:30-11:30 am NL Adult Education 1 Class
Resident \$84/Non-resident \$89 Instructor: Lenora Alcee

222 Calligraphy 101

Take some time to learn the top ten basic calligraphy skills to explore and enjoy a passion for calligraphy. Have fun with simple worksheets and easy skills to practice & bring home. Supply List:

Micron Calligraphy Pens sizes #5 & #8

Tuesday 5/14 6:00-8:00 pm NL Adult Education 1 class
Resident \$49/Non-Resident \$54 Instructor: Sean Kane

220 The Joy of Movies

Rick Gipstein continues our popular film history series. It will focus on viewing and discussing movies that have some historical significance as well as more obscure ones you may not have seen. The course venue is the BP Learned mini theater, which has a large screen, comfortable seats, and good sound. If you love films, you'll love this course.

Wednesday 3/20 6:30-9:30 pm
7 classes NL Adult Education
Resident \$99/Non-resident \$104
Instructor: Rick Gipstein



223 Beyond Pastel Techniques

This class will explore going beyond just pastel techniques. We'll begin with working with a variety of materials to create our own unique surfaces for our pastel paintings. Join us in this exploration of pure pigment Pastels and broaden your skills. Students are required to bring a smock & baby wipes and materials listed on website & at registration.

Tuesday 3/12 6:00-8:00 pm 5 classes Fitch HS

Resident \$109/Non-resident \$114 Instructor: Laura LoTurco-Gorian

224 Monotypes & Gel Plate Printmaking

We will explore the unique impressions that can be created by combining a variety of materials to achieve a creative understanding of this versatile printing method. Students are required to bring a smock & baby wipes and materials are listed on the website & at registration.

Saturday 2/10 9:00-11:30 am 5 classes NL Adult Education or

Wednesday 5/29 9:00-11:30 am 5 classes NL Adult Education

Resident \$109/Non-resident \$114 Instructor: Laura LoTurco-Gorian

225 Introduction to Basketry

Begin exploring the world of basketry by weaving a flat-reed basket that measures (10 "long, 6 ½ "wide, 4 ½ "high), which can be used in a variety of ways. Shaping will be emphasized and students can personalize their basket by selecting from a variety of accenting colors available at class. This basket has a colorful chain pattern embellis-



hing its circumference. Upon completion of this course, students will be able to build on other basketry techniques and the use of other weaving materials. A material fee of \$15 is payable to the instructor on the first day of class. Tools for making the basket will be provided by the instructor for use- during the class. Bring a Lunch.

Saturday 2/3 10:00 am-3:00 pm or Saturday 2/17 10:00-3:00 pm
NL Adult Education 1 Class
Resident \$69/Non-resident \$74 Instructor: Nancy Kalos



226 Arranging Peonies Workshop

Come to Best Buds Flower Farm in Lyme for an afternoon of harvesting peonies, plus greenery and other filler flowers. We will guide you or let you roam free as you create an arrangement in a vase that we provide. Please wear sturdy, closed toe shoes and bring a hat and water bottle. We only postpone for thunder and lightening storms, so dress for the weather. Space is limited.

Saturday 6/15 10:00-12:00 pm 1 class
Resident \$64/Non-resident \$69
Best Buds Flower Farm 52 Blood St, Lyme

227 Amazing Peony Picking

At Best Buds Flower Farm in Lyme, we have about 400 peony plants that put on a wonderful show in June. Join us and pick 10 peonies and greenery which we will wrap up for you in a kraft paper sleeve to take home. We have clippers on hand. Please bring a container to take your blooms home. Wear sturdy, closed toe shoes and bring a hat and a water bottle. We only postpone for thunder and lightening, so dress for the weather.

Thursday 6/13 5:00-6:30 pm or
Wednesday 6/19 5:00-6:30 pm 1 class
Resident \$49/Non-resident \$54
Best Buds Flower Farm 52 Blood St, Lyme

228 Arranging Dahlias Workshop

Come to Best Buds Flower Farm in Lyme for an evening of harvesting dahlias, plus zinnias, sunflowers and others and learning to arrange in a vase. We will have a farm tour with information about how to cut the flowers and greenery. Then take your time to explore and gather flowers using the clippers and buckets we have on hand. You'll want to get at least 20-30 stems. Please wear sturdy, closed toe shoes and bring a water bottle. We only postpone for thunder and lightening storms, so dress for the weather.



Friday 8/16 6:00-8:00 pm 1 Session
Resident \$64/Non-resident \$69
Best Buds Flower Farm, 52 Blood St, Lyme

229 Pressed Flower Sun Catchers & Bookmarks

Designing bookmarks and Suncatchers with dried flowers All the materials are included. Make 4 bookmarks and 4 suncatchers.

Saturday 4/6 9:00 am -12:00 pm or Friday 6/7
9:00-12:00 or Thursday 7/11 9:00-12:00 pm or
Thursday 8/15 9:00-12:00 pm
NL Adult Education 1 Class
Resident \$39/Non-resident \$44
Instructor: Meg Lemar

230 Pressed Flower Lanterns

These Lanterns are so pretty lit with a votive candle or tea light candles. We will be making 2 different sizes for you to take home. I will supply all the materials come and enjoy the class.

Thursday 6/20 9:00-12:00 pm or
Thursday 7/25 9:00-12:00 pm
NL Adult Education 1 Class
Resident \$39/Non-resident \$44
Instructor: Meg Lemar

231 Pressed Flower Ring Dish

Design and make 2 pretty ring dishes to take home and use or give as a gift. They are quick and easy to make and will be dry before you go home with them. All of the materials are included.

Saturday 4/13 9:00-12:00 pm or Friday 6/14
9:00-12:00 pm or Thursday 4/18 9:00-12:00 pm
or Thursday 8/8 9:00-12:00 pm NL Adult Educa-
tion 1 Class Resident \$39/Non-resident \$44
Instructor: Meg Lemar

**Get your diploma
 or GED,
 and craft your
 way to a
 brighter future!**





301 The Telescope: 16th Century to 20th Century

Explore the golden age of antique and classic telescopes when men such as Hans Lipperhey, Galileo Galilei, Sir Issac Newton, William Parsons' Leviathan of Parsonstown, William Herschel, George Ellery Hale and many more.

Wednesday 4/24 6:00-9:00 pm NL Adult Education 1 Class
Resident \$29/Non-Resident \$34 Instructor: R. Zincone

302 Introduction to Astronomy Part 1 - Our Solar System

Instructor and astrophotographer Ronald Zincone will help you understand and learn about the cosmic wonders such as the planets, stars, comets, meteors, our sun and moon and so much more!

Wednesday 3/27 6:00-9:00 pm NL Adult Education 1 Class
Resident \$29/Non-Resident \$34 Instructor: R. Zincone

303 Introduction to Astronomy Part 2 - Backyard Astronomy

Learn how to break into this fascinating hobby covering topics such as choosing and using equipment, such as telescopes, optical eyepieces, accessories, and tips and techniques, do's and don'ts.

Monday 4/1 6:00-9:00 pm 1 Class NL Adult Education
Resident \$29/Non-Resident \$34 Instructor: R. Zincone

304 Astronomy & the Star of Bethlehem

This exciting and fascinating course introduces you to a brief history of the Star of Bethlehem. Was the story behind the "Star" fact or fiction?

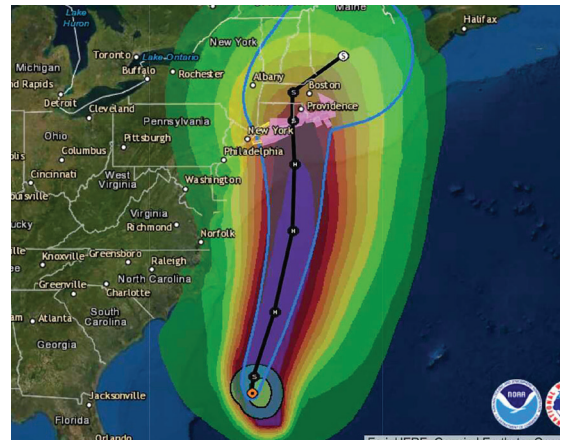
Monday 5/6 6:00-9:00 pm NL Adult Education 1 Class
Resident \$29/Non-Resident \$34
Instructor: R. Zincone



300 Atmosphere & Weather & Its Influence on Art

This course introduces you to a brief history of famous artists who have captured and combined elements of Nature, specifically atmosphere and weather, in their compositions. We will look at art paintings from the Impressionistic period from artists such as Monet, Van Gogh, Sisley and Corot and pre-and post-impressionistic painters such as Munch and Turner and touch upon contemporary painters as well.

Monday 4/22 6:00-8:00 pm 1 class NL Adult Education
Resident \$29/Non-resident \$34 Instructor: Ronald Zincone



305 Southern New England Hurricanes: A tropical storm in the Bahamas is our Business

Learn how to prepare for future tropical systems and especially a repeat category 3 hurricane. This short but powerful course is designed for public outreach and to educate the population in SNE and especially people who live along the coastal areas.

Monday 3/11 6:00-9:00 pm 1 Class NL Adult Education
Resident \$29/Non-Resident \$34 Instructor: R. Zincone

306 Introduction to Weather

This course is designed to introduce and educate you on the basics of our daily weather.

Wednesday 4/10 6:00-9:00 pm Via Zoom 1 Class
Resident \$29/Non-Resident \$34 Instructor: R. Zincone

307 Introduction to SEVERE Weather

This course specifically covers weather that is of a "severe" nature and that would impact your life at any time.

Monday 4/15 6:00-9:00 pm NL Adult Education 1 Class
Resident \$29/Non-Resident \$34 Instructor: R. Zincone



401 Estate Planning

Avoid leaving your loved ones behind without an Estate Plan! Estate Planning is not just for the wealthy. Estate Planning is for everyone. Give your heirs peace of mind and prevent potential conflicts. Come and learn more at this group presentation, and take the guess work out of some of the most important decisions affecting your Estate.

Tuesday 4/23 Waterford HS 6-8 pm or Thursday 4/18 Old Lyme MS 6-8 pm or Thursday 4/25 Fitch HS 6-8 pm or Sat. 4/27 NL Adult Education 10 am - noon
1 Class Resident \$19/Non-resident \$24 Instructor: Abbas Danesh

401S Estate Planning - Daytime

Monday 5/20 9:00-11:00 am or Wednesday 7/10 9:00-11:00 am or Monday 8/12 9:00-11:00 am NL Adult Education
1 Class Resident \$19/Non-resident \$24 Instructor: Abbas Danesh

400 Required Minimum Distributions Planning & Taxes & Fees in Retirement

This educational event will cover the basics of Required Minimum Distributions and reveal the latest strategies to help prevent taxes from taking 30% of your savings income! Come and learn more at this group presentation.

Thursday 5/2 Old Lyme MS 6:00-8:00 pm or Tuesday 4/30 Fitch HS 6:00-8:00 pm or Saturday 5/4 NL Adult Education 10:00 am-12:00 pm or Monday 5/6 NLSTMHS 6:00-8:00 pm
1 Class Resident \$19/Non-resident \$24 Instructor: Abbas Danesh

400S Required Minimum Distributions Planning & Taxes & Fees in Retirement-Daytime

Wednesday 5/22 9:00-11:00 am or Monday 7/22 9:00-11:00 am or Wednesday 8/14 9:00-11:00 am NL Adult Education
1 Class Resident \$19/Non-resident \$24 Instructor: Abbas Danesh

402 Social Security Planning

This informative presentation covers the basics of Social Security and reveals strategies for maximizing your benefits.

Wednesday 5/15 or Tuesday 4/9 or Monday 3/11 6:30-8:30 pm One Session Live-OnLine
Resident \$19/Non-Resident \$24 Instructor: Charles Yannich

500 Podcasting101

Are you interested in Podcasting but don't know where to start? Then take our Podcasting Class, learn the in's and outs, & the do's and don'ts of Podcasting, as well as starting one, how to set one up, and what it takes to do it.

Thursday 3/14 6:00-8:00 pm or Thursday 7/11 10:00-11:30 am NL Adult Education 4 Classes
Resident \$49/Non-Resident \$54
Instructor: Steven Christina Jr.



501 MS WORD 101

Learn the basics of Microsoft WORD, a versatile program that has many uses in your daily life.

Saturday 2/10 11:30 am-1:30 pm NL Adult Education 5 Classes
Resident \$59/Non-Resident \$64 Instructor: Soufyane Ballouki



502 MS WORD 102

Advance your knowledge of Microsoft WORD.

Saturday 3/16 11:30 am-1:30 pm NL Adult Education 5 Classes
Resident \$59/Non-Resident \$64
Instructor: Soufyane Ballouki

503 MS EXCEL 101

Learn the basics of Microsoft EXCEL, a versatile program. Checkbook balancing, inventory & more.

Saturday 2/10 9:00-11:00 am NL Adult Education 5 Classes
Resident \$59/Non-Resident \$64 Instructor: Soufyane Ballouki



504 MS EXCEL 102

Advance your knowledge of Microsoft EXCEL.

Saturday 3/16 9:00 - 11:00 am NL Adult Education 5 Classes
Resident \$59/Non-Resident \$64
Instructor: Soufyane Ballouki

600**Basics for Learning to Use Your DSLR Camera**

Do you have a digital camera you are not sure how to use or do not understand it? This class will instruct you on the basics of how the camera functions, the correct setup, and the camera menus. Our focus is to help you gain experience and understanding on how to use it to its maximum advantage. You'll leave with a stronger foundation and confidence when using your camera. Please bring your camera and charged batteries to every class, a willingness to learn, and we will help you get to a new level. Be prepared to

bring your laptop to one of the classes to download your photos when notified.

Monday 3/11 6:00-8:30 pm NLSTMHS or Thursday 3/14 Old Lyme MS 6:00-8:30 8 Classes

Resident \$139/Non-Resident \$144

Instructor: Lee Palombo & Gregg Jacobson

602**Basic Astrophotography**

This class will cover the first and most basic level of astro-imaging known as Basic Camera-on-Tripod Astrophotography!

Wednesday 4/3 6:00-9:00 pm

NL Adult Education 1 Class

Resident \$29/Non-Resident \$34

Instructor: R. Zincone

603**Advanced Astrophotography Techniques**

This course introduces the students to Advanced Astrophotography. Topics include piggybacking, afocal, prime focus, eyepiece projection, webcam astro-imaging using a telescope!

Monday 4/8 6:00-9:00 pm

Via Zoom 1 Class

Resident \$29/Non-Resident \$34

Instructor: R. Zincone

608**Learning How to Compose Your Pictures**

area to practice and discuss photo editing. Bring your cameras & charged batteries to each class.

Saturday 1/20 10:00 am -12:00 pm NL Adult Education 5 Classes

Resident \$84/Non-Resident \$89 Instructor: Lee Palombo & Gregg Jacobson

601**Business of Photography**

This course introduces you to the basic and most important steps on how to set up your business for photography. This course covers topics such as creating your website, business card, logo, marketing, licenses and permits, business entity choices and so much more!

Monday 3/25 or Monday 5/20 6:00-9:00 pm

NL Adult Education 1 Class

Resident \$44/Non-Resident \$49

Instructor: Ronald Zincone

604**Photography Basics: Part One**

This course in Photography Basics is designed to teach and educate you on the very basics of 35mm photography with an emphasis on "digital photography."

Wednesday 3/20 or Wednesday 5/8

NL Adult Education 6:00-9:00 pm 1 Class

Resident \$44/Non-Resident \$49

Instructor: Ronald Zincone

605**Photography Basics: Part Two**

Photography Basics Part 2 course will introduce you to the "art side" of photography called "composition" and then introduce you to the principles of "exposure" and "light."

Thursday 3/28 or Monday 5/13

NL Adult Education 6:00-9:00pm

1 Class Resident \$44/Non-Resident \$49

Instructor: Ronald Zincone

606**Learn Your Camera's Creative Modes: say "Good-bye" to Auto**

This class will teach you two camera modes that will take care of 90% of your photographic subjects. Have your camera ready.

Wednesday 3/13 or 5/15

6:00-9:00 pm NL Adult Education

1 Class Resident \$44/Non-Resident \$49

Instructor: Ronald Zincone

607**Impressionism - The Influence of Photography**

Introduction to how the beginnings of photography influenced the Impressionist painters and what was to become Impressionism in France from the early 1860's to the late 1880's.

Wednesday 4/17 6-9 pm NL Adult Education

1 Class Resident \$44/Non-Resident \$49

Instructor: Ronald Zincone



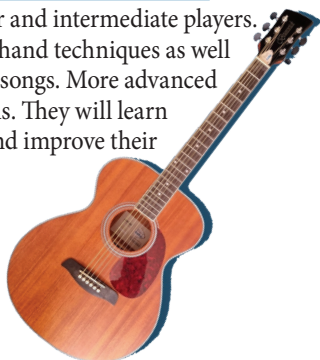
DAYTIME CLASSES AT NL ADULT EDUCATION

	Class Title	START DATES	START TIME	END TIME	RESIDENT	NON-RES.	PAGE	
CULINARY	Buttercream Flowers	MULTI	9:00 AM	12:00 PM	\$39.00	\$44.00	26	
	Chef Jr's Kids Cooking Class	3/9	9:00 AM	11:00 AM	\$64.00	\$69.00	27	
	Easter Gingerbread Cookies	3/30	9:00 AM	12:00 PM	\$39.00	\$44.00	26	
	Easy Summer Picnic Desserts	MULTI	9:00 AM	12:00 PM	\$49.00	\$54.00	27	
	One Pot Methods Workshop	3/2	9:00 AM	11:00 AM	\$64.00	\$69.00	27	
	Plant Based Nutrition Workshop	2/24	9:00 AM	11:00 AM	\$64.00	\$69.00	27	
	Royal Frosting Flowers	MULTI	9:00 AM	12:00 PM	\$49.00	\$54.00	26	
	Soups 101 Workshop	2/17	9:00 AM	11:00 AM	\$64.00	\$69.00	27	
CAREER TRAINING	Certified Nursing Assistant Training	MULTI	8:00 AM	4:00 PM	\$1,099.00	\$1,099.00	9	
	EMT Initial Basic Training Daytime	6/17	8:00 AM	3:00 PM	\$1,200.00	\$1,200.00	8	
	Espanol Serv-Safe	2/10	8:00 AM	3:00 PM	\$195.00	\$200.00	10	
	Real Estate Principles & Practices	1/6	9:00 AM	3:00 PM	\$575.00	\$580.00	10	
PHOTOGRAPHY / TECHNOLOGY / FINANCE	Learning How to Compose Your Pictures	1/20	10:00 AM	12:00 PM	\$84.00	\$89.00	17	
	MS Excel 101	2/10	9:00 AM	11:00 AM	\$59.00	\$64.00	16	
	MS Excel 102	3/16	9:00 AM	11:00 AM	\$59.00	\$64.00	16	
	MS Word 101	2/10	11:30 AM	1:30 PM	\$59.00	\$64.00	16	
	MS Word 102	3/16	11:30 AM	1:30 PM	\$59.00	\$64.00	16	
	Podcasting 102	7/11	10:00 AM	11:30 AM	\$49.00	\$54.00	16	
	Estate Planning to Avoid Mistakes	MULTI	10:00 AM	12:00 PM	\$19.00	\$24.00	16	
	Required Min. Dist. Planning	MULTI	9:00 AM	11:00 AM	\$19.00	\$24.00	16	
	ART, CRAFTS & HOBBIES	Basketweaving	2/17	10:00 AM	3:00 PM	\$69.00	\$74.00	14
		Basketweaving	2/3	10:00 AM	3:00 PM	\$69.00	\$74.00	14
Chinese Watercolor Painting Workshops		MULTI	9:00 AM	2:30 PM	\$84.00	\$89.00	13	
Crochet		1/13	11:30 AM	1:30 PM	\$104.00	\$109.00	12	
Composing Objects		2/9	10:00 AM	3:00 PM	\$54.00	\$59.00	11	
Composing Abstracts		1/19	10:00 AM	3:00 PM	\$54.00	\$59.00	11	
Composing Figures		4/5	10:00 AM	3:00 PM	\$54.00	\$59.00	11	
Composing Landscapes		3/8	10:00 AM	3:00 PM	\$54.00	\$59.00	11	
Figure Drawing Class		3/11	2:00 PM	5:00 PM	\$94.00	\$99.00	11	
Developing Personal Content in Your Art		6/24	9:30 AM	2:30 PM	\$249.00	\$254.00	11	
Goat Milk Soap		4/20	8:30 AM	11:30 AM	\$84.00	\$89.00	13	
Intro to Acrylic Pouring		MULTI	9:00 AM	12:00 PM	\$69.00	\$74.00	11	
Monotypes & Gel Plate Printing		MULTI	9:00 AM	11:30 AM	\$109.00	\$114.00	13	
Perspective Challenge - A Intermediate		1/27	9:00 AM	1:00 PM	\$54.00	\$59.00	11	
Pressed Flower Lanterns		MULTI	9:00 AM	12:00 PM	\$39.00	\$44.00	14	
Pressed Flower Ring Dish		MULTI	9:00 AM	12:00 PM	\$39.00	\$44.00	14	
Pressed Flower Sun Catchers & Bookmarks		MULTI	9:00 AM	12:00 PM	\$39.00	\$44.00	14	
Quilling		MULTI	10:00 AM	12:30 PM	\$55.00	\$60.00	12	
The 4 nobles of Sumi - Bamboo		MULTI	9:00 AM	11:00 AM	\$39.00	\$44.00	12	
Watercolor for Relaxation		3/15	1:00 PM	3:00 PM	\$89.00	\$94.00	12	
LANGUAGE	Arabic for the Beginner	2/10	11:30 AM	12:30 PM	\$79.00	\$84.00	20	
	French 2	6/27	12:00 PM	2:00 PM	\$139.00	\$144.00	20	
	French for the Beginner	1/13	9:00 AM	11:00 AM	\$139.00	\$144.00	21	
	French for the Beginner	6/28	12:00 PM	2:00 PM	\$139.00	\$144.00	21	
	French I	3/12	4:00 PM	5:30 PM	\$89.00	\$94.00	20	
	Spanish 2 - Daytime NLAE	1/24	1:00 PM	3:00 PM	\$89.00	\$94.00	20	
	Spanish 3 (continued)	2/10	9:30 AM	11:00 AM	\$89.00	\$94.00	20	
	Spanish for the Beginner - Afternoon NLAE	3/12	4:00 PM	6:00 PM	\$119.00	\$124.00	20	
	Spanish II	9/23	9:30 AM	10:30 AM	\$89.00	\$94.00	20	
	Spanish III	9/23	11:00 AM	12:00 PM	\$89.00	\$94.00	20	
FITNESS & HEALTH PERSONAL GROWTH	Whispers from Heaven	3/15	1:00 PM	3:00 PM	\$39.00	\$44.00	24	
	(SAFE) Basic Self-Defense for Women	4/13	9:00 AM	1:00 PM	\$49.00	\$54.00	23	
	Personal Safety & Self Defense for Seniors	5/30	10:00 AM	11:00 AM	\$24.00	\$29.00	22	
	Comedy Writing & Performance	5/29	9:00AM	12:00 PM	\$94.00	\$99.00	21	

700 Guitar for Beginners and Intermediates

This guitar class is perfect for beginner and intermediate players. Newbies will learn basic right and left hand techniques as well as basic chords to play some easy rock songs. More advanced players will build on their current skills. They will learn how to play higher areas of the neck and improve their rhythm and lead playing.

Tuesday 3/12 6:30-8:30 pm 6 Classes
Waterford HS
Resident \$114/Non-Resident \$119
Instructor: Don Cash



702 Instant Guitar for Hopelessly Busy People

Have you ever wanted to learn the guitar but simply find it difficult to find the time? In just a few hours you can learn enough about playing the guitar to give you years of musical enjoyment it. This crash course will teach you some basic chords and get you playing along with your favorite songs. This class is held online with ZOOM, you will be able to sit at home with your guitar and take this class without any pressure. The class includes an online book and online follow-up video lessons, to continue your practice and study on your own. For ages 13+.

Tuesday 3/26 6:30-9:00 pm One Class – Live-OnLine
Resident \$64/Non-Resident \$69

701 Instant Piano for Hopelessly Busy People

In just a few hours, you can learn enough secrets to give you years of musical enjoyment. Learn to play piano the way professionals do—using chords. This class is held online with ZOOM you will be able to sit at your piano or keyboard at home and take this course with no pressure. This course includes an online book and online follow up video lessons to continue your practice and study on your own. The course is partly lecture/demonstration and partly hands on instruction.



Monday 3/25 6:30-9:30 pm
One class – Live-OnLine Resident \$64/Non-Resident \$69

703 How to Play Piano by Ear

This is an ideal follow-up to the “Instant Piano” class and is open to anyone who has a basic understanding of chords on any instrument. Expand your musical horizons, and free yourself from sheet-music dependence, and be the life of the party! Prior experience with chords recommended. Fee includes the online book, online follow-up lessons, a recording of the class and an optional monthly question and answer session.

Class is held online using zoom.

Saturday 1/20 9:00-11:30 am or Saturday 3/16 9:00-11:30 am
One Class – Live-OnLine Resident \$64/Non-Resident \$69

704 Learn to Play Conga

This course will provide the beginner drummer with the fundamentals of conga playing. You will learn a brief history of the drum and how to tune and maintain your drum. Learn hand positioning, tones, techniques and different rhythms and patterns. The course will provide a cool understanding for the beginner and intermediate drummer to enhance and enjoy their drumming experience for years to come. Bring your drum to class. If you do not have a drum, one may be available.



Tuesday 3/12 5:30-8:30 pm
NL Adult Education
6 Classes
Resident \$109/
Non-Resident \$114
Instructor: Doc Frazier

811 French for the Beginner

Start on your exploration of the French language from the beginning. Start with the basics and build your vocabulary. Textbook included in cost of class.

Saturday 1/13 8:30-11:00 am 9 Classes or Friday 6/28 12:00-2:00 pm
NL Adult Education 8 Classes
 Resident \$139/Non-Resident \$144 Instructor: Judy Telemaque

812 French 2

Continue your study of the French language. The New Textbook is included in the cost of the class.

Thursday 2/8 5:00-6:30 pm 8 Classes or Thursday 6/27 12:00-2:00 pm
NL Adult Education 7 Classes Resident \$139/Non-Resident \$144
 Instructor: Judy Telemaque

813 Beginning American Sign Language

Explore the world of manual communication. Learn the alphabet, how to finger spell, and more.

Monday 3/11 6:00-9:00 pm 8 Classes
New London STMHS or Thursday 3/14 6:00-9:00 pm
NL Adult Education 8 Classes Resident \$154/
Non-Resident \$159 Instructor: Donna Haggerty

814 Beginning/Intermediate American Sign Language

American Sign Language is a visual language that can enhance communication with those that are unable to hear a spoken language. Learn a language that can open the doors for others.

Tuesday 3/12 6:00-8:00 pm Waterford HS 8 Classes
 Resident \$139/Non-Resident \$144 Instructor: Shaleen Barrett

815 Advanced ASL

This course is for those who want to expand their ASL Vocabulary.

Tuesday 3/12 Waterford HS or
Wednesday 3/13 NL Adult Education
8 Classes 6:00-9:00 pm
 Resident \$154/Non-Resident \$159
 Instructor: Donna Haggerty

PERSONAL GROWTH / PETS

900 Comedy Writing & Performance

Whether you've always wanted to try comedy or want to hone your skills, have a space to practice your craft and learn from the pros. The class will have new exercises for returning (or experienced) students, but will be accessible to students of all levels.

Wednesday 3/13 6:00-9:00 pm or Wednesday 5/29 9:00 am -12:00 pm
NL Adult Education 8 classes Resident \$94/Non-resident \$99 Instructor: David Iscoe



901 Unleash Your Creative Potential: Discover Your Writer's Voice & Craft Your First Novel

In this immersive class, you will be provided with personalized guidance and support as you explore various writing techniques and delve into the intricacies of the writing craft in various genres. Whether you're a novice seeking to ignite your creative spark or an experienced writer striving to refine your skills, this class is designed to cater to all levels of expertise.

Tuesday 3/12 6:00-8:00 pm Waterford HS 8 Classes Resident \$79/Non-resident \$84 Instructor: Karla Ciaglo



1000 Pet First Aid & Disaster Response

This unique course is ideal for all pet owners and pet caregivers. "Pet First Aid and Disaster Response" covers common health and safety related issues, CPR, first aid basics, when to seek professional care, and disaster planning steps for proper care of pets. Pet America Certificate.

Tuesday 3/19 6:00-9:00 pm NL Adult Education 1 Class
 Resident \$84/Non-resident \$89
 Instructor: Emergency Training Services

FITNESS & HEALTH

1100

Yoga A, B, C's at NLAE

Ever wanted to try Yoga but was too intimidated to take the class? This class will go through all the basic poses and include a little yoga history as well. Please bring a yoga mat.

Tuesday 3/12 7:00-8:00 pm NL Adult Education
6 Classes Resident \$54/Non-resident \$59
Instructor: Jennifer Lambert

1102

G's Fitness Strength Training

If you're interested in feeling stronger, healthier, and more vital, this program is for you. This strength-training program was developed by certified personal trainers who have a degree in exercise science. Choose a start date of February 5 or March 4.

Unlimited Sessions within a 4-week period Monday -Friday
Sessions conducted at G's Fitness & Nutrition, Waterford
Classes meet during these times:
8:00-8:30 am or 12:00-12:30 pm
1:00-1:30 pm or 2:00-2:30 pm or 6:00-6:30 pm
Resident \$130 Non-Resident \$135

1103

G's Small Group Training

In a group setting, this training offers a variety of strenuous exercises to garner better physical results such as an increase in aerobic and anaerobic fitness, tone muscles, increase flexibility, improve balance and coordination. Choose start date of February 5 or March 4 All fitness levels welcome!

Unlimited Sessions within a 4-week period
Sessions conducted at G's Fitness and Nutrition, Waterford
Classes meet at these times:
6:00 am or 7:30 am or 8:00 am or 11:00 am
12:00 pm or 1:00 pm or 5:00 pm or 6:00 pm
Monday through Friday 2/5 or 3/4
Resident \$130/Non-Resident \$135

1104

Personal Safety & Self Defense for Seniors

In 3 one-hour long sessions we focus on crime prevention, situational awareness, and basic self-defense tactics. The class is geared for ages 60 and up. Age and physical limitations do not have to prevent you from learning how to protect yourself. Please come in gym attire suitable for physical activity.

Thursday 5/30 10:00-11:00 am NL Adult Education
3 classes Resident \$24/Non-resident \$29
Instructor: Frank Dawson

1101

Zumba (for ages 19+)

A total workout, combining all elements of fitness-cardio, muscle conditioning, balance and flexibility, boosted energy and a serious dose of awesomeness each time you leave class. For ages 19+

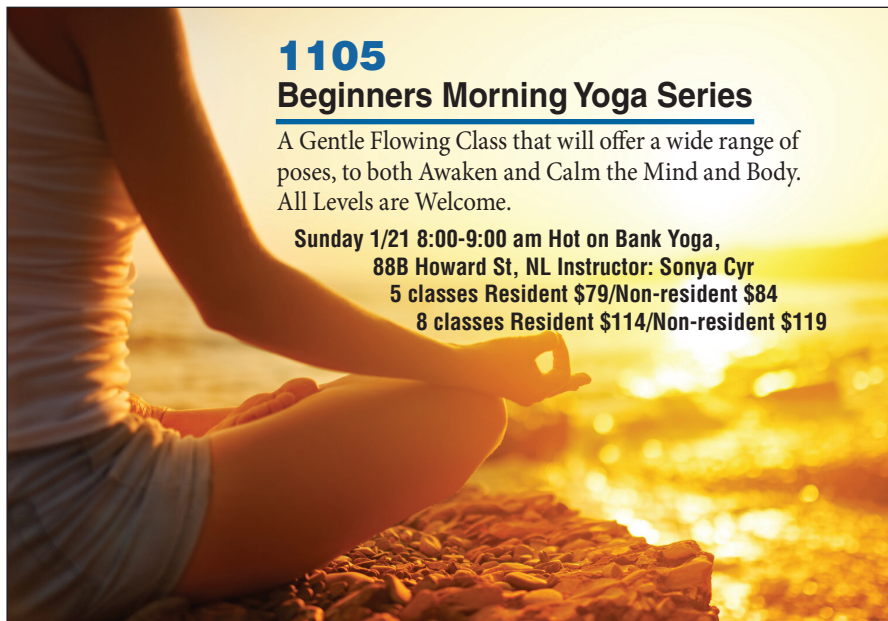
Monday 1/22 4:15-5:15 pm or 3/11 4:15-5:15 pm NL Adult Education
6 Classes Resident \$59/Non-resident \$64 Instructor: John Giannini

1105

Beginners Morning Yoga Series

A Gentle Flowing Class that will offer a wide range of poses, to both Awaken and Calm the Mind and Body. All Levels are Welcome.

Sunday 1/21 8:00-9:00 am Hot on Bank Yoga,
88B Howard St, NL Instructor: Sonya Cyr
5 classes Resident \$79/Non-resident \$84
8 classes Resident \$114/Non-resident \$119



1106

All Levels Hot Yoga Series

A Moderate Level Class focusing on flowing from pose to pose and linking the movement with the breath. The instructor will offer a variety of modifications to encourage participation from everyone. We do seated, standing, and inverted postures, and suggest challenging variations for more advanced students, yet fun and non-intimidating options for newer students. All Levels - Beginners Welcome! Room is 90°.

Sunday 1/21 4:30-5:30 pm am Hot on Bank Yoga, 88B Howard St, NL
5 classes Resident \$79/Non-resident \$84 or
8 classes Resident \$114/Non-resident \$119 Instructor: Tasia Wescott

1107

Tae Kwon Do

Students learn in an environment that encourages teamwork, self-development, and safety. We follow a strict no-contact philosophy Students in this introductory class are welcome to wear a martial arts uniform or shorts and a tee shirt. Dr. Brian Maguire is a 7th degree black belt and has been practicing and teaching Tae Kwon Do for over four decades. As a university professor, Dr. Maguire has taught Tae Kwon Do in Connecticut, New York, Maryland, Washington, DC, and in Australia.

Monday 2/5 5:00-6:00 pm NL Adult Education
8 classes Resident \$99/Non-resident \$104 Instructor: Dr. Brian Maguire

1108
(SAFE) Basic Self-Defense for Women

(SAFE) Situational Awareness & Fundamental Empowerment is a one-day workshop that explores real world violence and offers a pragmatic approach to personal safety. This program examines predator behavior, promotes situational awareness, and teaches some practical self-defense skills. The integral component of (SAFE) training is to develop a survival mindset. This program is ideal for women who may have concerns about personal safety. This workshop is both informative and empowering and geared towards all fitness levels. Please come in gym attire suitable for physical activity.

Saturday 4/13 9:00 am -1:00 pm NL Adult Education 1 Class
Resident \$49/Non-resident \$54
Instructors: Frank Dawson & Jennifer Thornell

1109
Zumba

Every class feels like a party, Ingrid guarantees you will have a blast! Wear comfortable clothing and sneakers. Don't forget your water and get ready for a great time getting into shape. For ages 10+

Thursday 2/8 6:00-7:00 pm NL Adult Education 6 Classes
Resident \$59/Non-resident \$64 Instructor: Ingrid Orellana

1110
Valentine's Yoga Date Night

This gentle partner yoga is about fun and connection. We will do some Thai Yoga Massage, which is a partner yoga that involves relaxing restorative shapes and gentle massage. Partners will experience relaxing, easily accessible shapes. This class is appropriate for people of all levels of ability.

Wednesday 2/14 7:00-8:00 pm Red Barn Yoga, 52 Blood St, Lyme
Cost per couple Resident \$39/Non-resident \$44 Instructor: Joanie Fisler

1111
Absolute Beginner Yoga

You don't need to know anything for this class. We will keep a slow pace with room for questions. Bring a mat if you have one and wear loose fitting comfortable clothes. All classes are available on Zoom and in-person.

Saturday 1/20 10-11 am 2 Classes Resident \$49/Non-resident \$54
Instructor: Anne Redfield, Red Barn Yoga, 52 Blood St, Lyme

1112
Tai Chi, Level 1 (10 Form)

For centuries, millions from all ages have practiced Tai Chi daily. Practicing Tai Chi results in improved circulation, digestion, coordination, strength, and flexibility.

Monday 3/11 6:30-7:30 pm NL Adult Education 8 Classes
Resident \$114/Non-Resident \$119 Instructor: Yuehua

1113
Tai Chi Level 2 (24 Form)

This class is a continuation for those who have already completed level 1. We will further explore the health benefits of Tai Chi.

Monday 3/11 7:35-8:35 pm NL Adult Education 8 Classes
Resident \$114/Non-Resident \$119 Instructor: Yuehua



1114
Belly Dancing, Level 1 (all ages)

Did you ever want to learn the fascination of Belly Dancing? This class is for all ages. Belly dancing is good for all ages and is fun! It involves isolating and strengthening the muscles, and improves your posture, your mind and spirit! At the end of every class, we will be able to perform a little fun choreography! Comfortable clothing is recommended!

Wednesday 3/13 6:15 - 7:15 pm or Friday 3/15 10:00-11:00 am
NL Adult Education 8 Classes
Resident \$69/Non-Resident \$74 Instructor: Arabelle Vandersloot

1115
Belly Dancing, Level 2 (all ages)

Continue your Belly Dancing class, have fun & get some great exercise. Comfortable clothing is recommended!

Wednesday 3/13 7:30 - 8:30 pm or Friday 3/15 11:15-12:15
NL Adult Education 8 Classes Resident
\$69/Non-Resident \$74 Instructor: Arabelle Vandersloot

1116
All Levels Yoga

This class has a moderate pace with lots of options for more challenge or more relaxation. Yoga has been shown to have many benefits, including increased joint function, calmness of mind and mood elevation. Bring your mat if you have one and a water bottle. We have extra mats.

Tuesdays 1/16 9:15-10:30 am 2 Classes Resident \$39/Non-resident \$44
Instructor: Joanie Fisler Red Barn Yoga, 52 Blood St, Lyme

1117
Stop the Bleed

The purpose of the class is to make you better prepared to save lives if people nearby are severely bleeding. This class is done by raising awareness and teaching people how to learn three quick actions to control serious bleeding.

Tuesday 3/26 6:00-8:00 pm NL Adult Education 1 Class
Resident \$14/Non-resident \$19 Instructor: Emergency Training Services

1118

10-20-30 Challenge

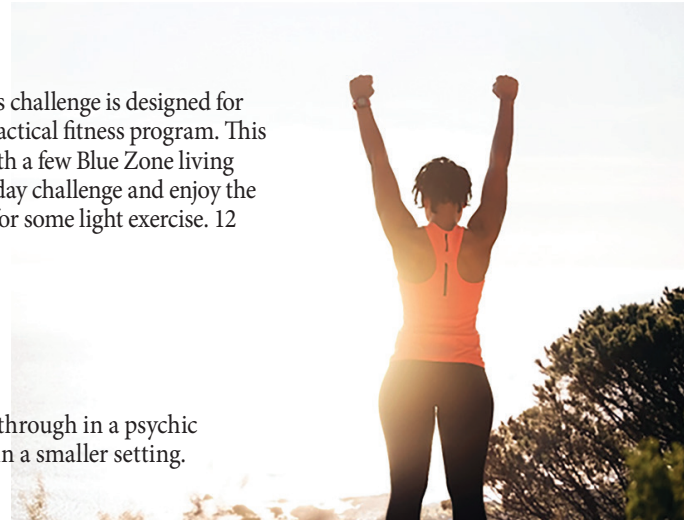
Have you been looking for a way to tone up and maybe shed a few pounds. This challenge is designed for those 50 plus years of age or anyone who might be struggling to find a more practical fitness program. This challenge will offer you a simple daily routine that you create at home along with a few Blue Zone living tips to help extend your longevity and overall well-being. Come take this (30) day challenge and enjoy the benefits of some modest lifestyle changes. Please come in gym attire designed for some light exercise. 12 Student Maximum.

Tuesday 4/9 6:00-7:00 pm NL Adult Education 4 Classes
Resident \$39/Non-Resident \$44 Instructor: Frank Dawson

1119 Whispers from Heaven

This class/ event helps you to experience the energy and messages that come through in a psychic mediumship reading. This is not a taught class but a opportunity to be read in a smaller setting.

Friday 3/15 1:00-3:00 pm NL Adult Education 1 Class
Resident \$39/Non-Resident \$44 Instructor: Patricia Griffin



Online Learning

anytime, anywhere...
just a click away!

Learn
from the
comfort of
home!



ONLINE CAREER TRAINING PROGRAMS

Prepare for employment in some of today's hottest careers with a comprehensive, affordable, and self paced online Career Training Program. You can begin these Programs at any time and learn at your own pace. Upon successful completion of all required coursework, you will receive a Certificate of Completion.

- 6-18 Month Format
- Prepare for certification
- All materials included
- Student advisors

Visit our website for program details!

careertraining.ed2go.com/nlae

INSTRUCTOR-LED ONLINE SHORT COURSES

Our instructor-led online courses are informative, fun, convenient, and highly interactive. We focus on creating warm, supportive communities for our learners. New course sessions begin monthly, are project-oriented and include lessons, quizzes, hands-on assignments, discussion areas, supplementary links, and more.

- 6 Week Format
- Monthly start sessions
- Discussion Areas
- Expert Instructor

Visit our website to find a course!

ed2go.com/newlondonadult/



2000

Horseback Riding: Beginning

Basic instruction will be given on the skill of horsemanship and horse care. This class is for beginners who have little or no experience in riding. Riding instructions will focus on balance and basic mechanics of riding. Students will also learn to groom, tack up and basic care of the horses. Classes are suitable for all ages. Participants should wear heeled shoes, boots are preferred. Riding helmets are provided by the instructor. All classes will be held at Outback Stables.

**Tuesday 2/13 6:00-7:00 pm or Thursday 2/15 6:00-7:00 pm or
Tuesday 4/2 6:00-7:00 pm or Thursday 4/4 6:00-7:00 pm 6 Classes**
Outback Stables 538 Colonel Ledyard Highway, Ledyard
Resident \$155/Non-Resident \$160

2001

Horseback Riding: Advanced Beginner

This course is for students that have taken the beginner class and are ready to take the next step. This class is for students 15 years of age and older. Riding helmets are provided by the instructor.

Wednesday 2/14 6:00-7:00 pm or Wednesday 4/3 6 Classes
Outback Stables Resident \$155/Non-Resident \$160

2002

Golf for Ladies Only

This class is for women who want to learn the art of golf. Lessons will cover the following fundamentals: grip, stance, posture, backswing, follow through, sand shots, downswing, chipping, putting, equipment info, and golf etiquette. Each lesson is one hour. Please bring a putter, 3 wood, 7 iron, and pitching wedge. Equipment is available to borrow if needed. There is a small fee for a bucket of balls for each lesson. Class size is limited to 10 students. 5 Classes

Thursday 5/2 10:00-11:00 am or 6:00-7:00 pm 5 Classes Tuesday 5/7 10:00-11:00 am or 6:00-7:00 pm 5 Classes
Thursday 9/5 10:00-11:00 am or 6:00-7:00 pm 5 Classes Monday 9/9 10:00-11:00 am or 6:00-7:00 pm 5 Classes
Great Brook Driving Range Resident \$175/Non-Resident \$180 Instructor: Christopher Hedden

2004

Learning the Fundamentals of Golf

Lessons will cover the following fundamentals: grip, stance, posture, backswing, follow through, sand shots, downswing, chipping, putting, equipment info, and golf etiquette. Please bring a putter, 3 wood, 7 iron, and pitching wedge. Equipment is available to borrow if needed. There is a small fee for a bucket of balls for each lesson. Class size is limited to 10 students.

Monday 4/8 10:00-11:00 am or 6:00-7:00 pm 5 Classes
Wednesday 4/10 10:00-11:00 am or 6:00-7:00 pm 5 classes
Wednesday 9/4 10:00-11:00 am or 6:00-7:00 pm 5 Classes
Great Brook Driving Range
Resident \$175/Non-Resident \$180 Instructor: Christopher Hedden

2005

4- Day Youth Golf Clinics

Learn to play golf & have some fun. Class size is limited to 12 students. The clinics are held at Elmridge Golf Course, 229 Elmridge Road, Pawcatuck Monday thru Thursdays. Class size is limited to 10 students.

Monday 6/17 8:00 - 11:00 am or Monday 6/24 8:00-11:00 am
Monday 7/1 8:00 - 11:00 am or Monday 7/8 8:00-11:00 am
Monday 7/15 8:00 - 11:00 am or Monday 7/22 8:00-11:00 am
Monday 7/29 8:00 - 11:00 am or Monday 8/12 8:00-11:00 am
Monday 8/19 8:00 - 11:00 am or Monday 8/26 8:00-11:00 am
Resident \$440/Non-Resident \$445 Instructor: Christopher Hedden

2003

Youth Golf Lessons (ages 8-15)

These classes are for youth ages 8-15 who want to learn the art of golf. Lessons will cover the following fundamentals: grip, stance, posture, backswing, follow through, sand shots, downswing, chipping, putting, equipment info, and golf etiquette. There is a small fee for a bucket of balls. Each lesson is one hour. Class size is limited to 10 students. 5 Classes

Saturday 4/13 11:00 am -12:00 pm or
Saturday 6/8 11:00-12:00 pm or
Saturday 9/7 11:00-12:00 pm
Great Brook Driving Range
Resident \$175/Non-Resident \$180
Instructor: Christopher Hedden





Photo for illustrative purposes only

3001 Easter Gingerbread Cookies

Just in time for Easter, come make these yummy gingerbread cookies and decorated them with a saying or a name. They measure about 5"x7", I will teach you how to make the dough, roll out the dough and decorate them for you to take home. Ingredients are included in class price. Please bring a ½ sheet cake size box to take them home in.

Saturday 3/30 9:00 am -12:00 pm or Thursday 3/28 6:00 - 9:00 pm NL Adult Education
1 Class Resident \$39/Non-resident \$44 Instructor: Meg Lemar

3000 Intro to Pasta and Sauces!

Come learn the art of pasta making with me as we explore four different classics paired together with a traditional sauce.

In this hands-on class, we will explore the world of pasta making. The menu for this session will include:

- Linguini with Cherry Tomato basil and Pancetta Sauce
- Gnocchi with Basil Pesto
- Lemon Ricotta Ravioli and Basil Cream Sauce
- Cappelletti with Broth
- Cappelletti in Broth

Bring your aprons and appetites for learning and sampling our pasta together!

Tuesday 3/12 5:30-8:00 pm Waterford HS
or 4/16 5:30-8:00 pm NL Adult Education
4 Classes

Resident \$129/Non-Resident \$134
Instructor: Kay Ellen Bernardo



Photo for illustrative purposes only

3002 Royal Frosting Flowers

Royal icing flowers harden unlike buttercream frosting flowers that stay soft. Take my class and learn how to make Royal icing and the flowers on a cake and on a flower nail. I will supply the frosting, and materials needed You bring a 13x9 cake of your flavor choice.

Saturday 3/16 9:00 am -12:00 pm or Friday 4/19 9:00-12:00 pm or
Friday 5/17 9:00-12:00 pm or Friday 7/12 9:00-12:00 pm or Friday 8/16
9:00-12:00pm

NL Adult Education 1 Class

Resident \$49/Non-resident \$54 Instructor: Meg Lemar

3003 Buttercream Flowers

Making flowers in not as hard a people think. Take my class and learn how to make Buttercream and the flowers on a cake and on a flower nail. I will supply the frosting, and materials needed You bring a 13x9 cake of your flavor choice.

Saturday 3/23 9:00 am -12:00 pm or Saturday 4/27 9:00-12:00 pm or
Friday 5/24 9:00-12:00 pm or Friday 7/26 9:00-12:00 pm or Friday 8/9
9:00-12:00pm

NL Adult Education 1 Class

Resident \$39/Non-resident \$44 Instructor: Meg Lemar



3004
Plant Based Nutrition Workshop

A crash course that dives into Plant-Based dishes that are both healthy & nutritious! Please bring an apron, knife & containers to bring food home.

Saturday 2/24 9:00 - 11:00 am NL Adult Education
1 Class Resident \$64/Non-resident \$69
Instructor: Erika Gradecki

3007
One Pot Methods Workshop

An introduction into cuisine that only require one pot to cook them in! Please bring an apron, knife & containers to bring food home.

Saturday 3/2 9:00 - 11:00 am NL Adult Education
1 Class Resident \$64/Non-resident \$69 Instructor: Erika Gradecki

3005
Chef Jr's Kids' Cooking Class

A crash course that dives into Plant-Based dishes that are both healthy & nutritious! Please bring an apron, knife & containers to bring food home.

Saturday 3/9 9:00 - 11:00 am NL Adult Education
1 Class
Resident \$64/Non-resident \$69
Instructor: Erika Gradecki

3008
Soups 101 Workshop

A foundational class that focuses on broth-based and cream-based soups, perfect for those cold days! Please bring an apron, knife & containers to bring food home.

Saturday 2/17 9:00 - 11:00 am NL Adult Education
1 Class
Resident \$64/Non-resident \$69
Instructor: Erika Gradecki

3006
Easy Summer Picnic Desserts

Just in time for Picnic Season! Learn some easy desserts to WOW your picnic guests. All materials are included in the class.

Friday 5/24 9:00 am -12:00 pm or Friday 6/28 9:00-12:00 pm or Friday 7/19 9:00-12:00pm or Friday 8/23 9:00-12:00 pm
NL Adult Education 1 Class
Resident \$49/Non-resident \$54
Instructor: Meg Lemar

*Cook up a new future
by earning your GED
or
High School
Credit Diploma*



Taste of Italian New York

Saturday April 27 • \$155pp

Visit three of New York Italian Food 'Hot Spots:' Zabars Upper West Side, Carmines Upper West Side and Arthur Avenue in the Bronx. Shop the best of the Italian foods and enjoy a family-style lunch at Carmines.

Pizza & Cannoli - Boston's North End

Sunday May 5 • \$150pp

Take a Leisurely guided walking tour thru the North End of Boston sampling Pizza, cannolis and gelato...Food included: 2 slices of pizza, 2 cannolis and gelato.

Cruisin' the Capitol - Albany New York



Saturday July 13 • \$155pp

Enjoy a 90 minute cruise of the Hudson River on the Dutch Apple II. Family style lunch at Buca di Beppo and time to enjoy the New York State Museum.

Chicago White Sox vs New York Yankees

Saturday May 18 • \$160pp

Watch the New York Yankees host the Chicago White Sox. Section 210 seats, \$15.00 meal voucher and back pack. Transportation with Peter Pan Bus Line on game day to the stadium from New London.



Made in Vermont

October 5 • \$TBD - Check the Fall 2024 Catalog for more info.

Weston Vermont - Vermont Country Store, Lunch and More... watch for the Fall 2024 catalog for more information



Newport Flower Show

Saturday June 22 • \$107pp

The Rosecliff Mansion is the backdrop to the Newport Flower Show. Tour the mansion and see the wonderful floral arrangements inside. Continue outside to see more beautiful displays. Time on your own in Newport for lunch and shopping.

Cranberry Bog Tour - Wareham MA

Sunday October 20 • \$TBD - Check the Fall 2024 Catalog for more info.

Visit A.D. Makepeace Company the worlds largest cranberry grower during harvest season. Learn about harvesting and gain some insight on being a cranberry farmer. Enjoy a buffet lunch at Mezza Luna in Buzzrds bay and stop at Wrights Dairy Farm & Bakery in North Smithfield, RI.

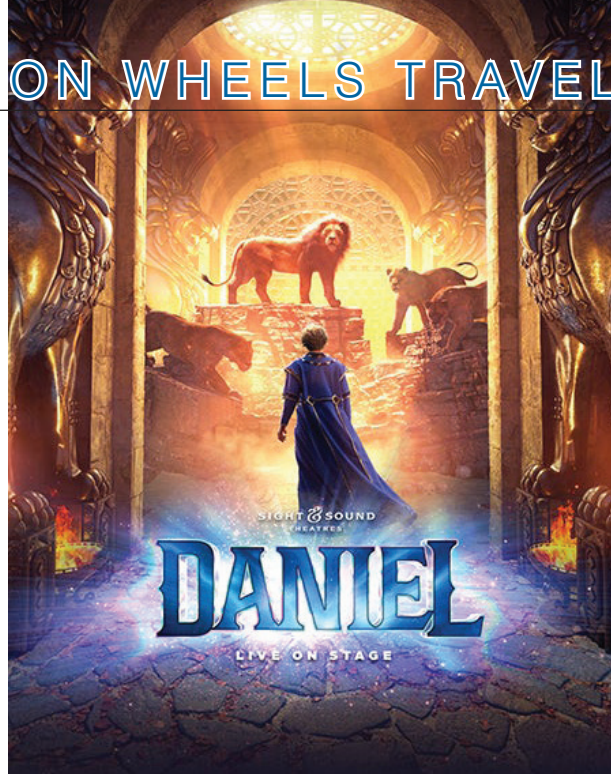
Watch for the Fall catalog in August with information on our Vermont Tour, Cranberry Bog Tour, Radio City Rockettes & The Stocking Stuffer Trip.

DANIEL – Sight & Sound Theatre May 15-17

Taken from his people, Daniel is exiled far from home in the powerful kingdom of Babylon. Now this faithful servant must navigate his new life inside a palace filled with golden statues and shifting empires. From the fiery furnace to the infamous den of lions, DANIEL is a spectacular theatrical experience for the whole family. Witness one of the Bible's most hope-filled stories as it comes to life in this brand-new original stage production from Sight & Sound Theatres®. Enjoy a dinner with an Amish Family in their home, visit Amish farms and stores. On the way home visit Longwood Gardens... One of the Worlds Great Gardens, Longwood Gardens is a living legacy of Pierre S. du Pont. Cost \$665pp double. Deposit \$150 per person by February 21, Final payment March 27.

Saratoga August 7-8,2024

Visit beautiful Saratoga Racetrack and enjoy the excitement of Thoroughbred Racing at its finest. After a day of racing enjoy some time on your own for dinner and maybe some gambling at the Saratoga Casino & Raceway. Spend the night at the newly refurbished Queensbury Hotel. Tour the Saratoga Racing Museum and then travel to Downtown Saratoga for some time on your own. Includes: Deluxe motorcoach, 1 night hotel, 1 breakfast, admissions as per itinerary, Friendship Tours Escort, Driver & Tour-Director Gratuity Cost \$389pp dbl / \$469 single. Deposit \$150 per person by May 15, Final payment June 19.

**The Fabulous Finger lakes - Geneva New York** September 17-19

Join us on a tour to the Fabulous Finger lakes, so scenic with the Lakes shaped like an outstretched hand. The tour features:

Deluxe Motorcoach * 2 Nights 41 Lakefront Hotel Geneva * Corning Museum of Glass * Pleasant Valley Winery 1 hour walking Tour & Tasting * Women's Rights National Historical Park * Dinner and cooking demonstration at the New York Kitchen * Erie Canal Cruise
5 Meals: 2 breakfasts, 1 lunch, 2 dinners Friendship Tours Escort. Deposit of \$749pp dbl / \$919 single. Deposit \$250 per person by June 4, Final payment July 30.



Find our lighthouse and be entered into a drawing for a \$50 NLAE gift certificate. Email the page number and location to cherrickm@newlondon.org. In the Subject line write Lighthouse. Two lucky winners will be selected. *(It is not the lighthouse on the registration form or logo). The next drawing date is April 15th.*

Congratulations to Robin Kimball our Fall Lighthouse Winner

OVERNIGHT & FLY TOURS

Repositioning Cruise - Southern Caribbean aboard the Zuiderdam

Nov 9-23, 2024 • Cost from \$2,549pp twin + taxes

Cruise from Boston to Bermuda, St. Thomas, St. Maarten, St. Lucia, Barbados, Half Moon Cay to Fort Lauderdale and fly to Boston

Roundtrip transportation from New London to Pier & Return from Airport (based on min. number) * Return flight from Fort Lauderdale

* 14 Nts onboard Holland America's Zuiderdam * All Meals onboard * Daily activities, entertainment * Full service Spa & Fitness Center

* Professional Ship Shop Escort

Call Donna or Barbara at 800-243-1630 for Reservations



Spain, Portugal & the Canary Islands aboard Celebrity Apex

Oct 11-23, 2024 • Cost from \$4,399 pp Inside Twin + taxes

What a wonderful itinerary... Combined with the Celebrity Apex which revolutionizes the way you experience the world! This amazing ship has many visionary features on board such as the Magic Carpet - a movable deck on the outside of the ship which transforms for different functions day and night; incredible high-tech theater with five rotating shows. Surrender to the carefree pleasures of the Rooftop Garden. Infinite Veranda staterooms that transform outside space to inside space with a touch of a button. Deposit \$900 with reservation



Roundtrip Transportation to Airport from New London (Based on min number) * Flights to London & Transfers to Southampton * 11 nights onboard the incredible Celebrity Apex * All meals onboard * Full Spa & Fitness Center * Variety of Entertainment options

Call Donna or Barbara at 800-243-1630 for Reservations

Call Donna or Barbara at 800-243-1630 for Reservations

New Year's Cruise from New Jersey aboard Odyssey of the Seas

Dec 29 - Jan 5, 2025 • Cost from \$1,399 pp twin + taxes

Celebrate the New Year in Coco Cay! Roundtrip transportation from New London to Pier & Return from Airport (based on min. number)

Enjoy 7 nights onboard the incredible Odyssey of the Seas. All meals onboard, Casino, Full Spa & Fitness Center, Nightly Entertainment, Fun-Filled activities available onboard and Professional Ship Shop Escort.



Call Donna or Barbara at 800-243-1630 for Reservations

Call Donna or Barbara at 800-243-1630 for Reservations

For Cruises -

There is transportation from New London with a minimum of 8 passengers. Other pick-up locations are available.

Canadian Rockies & Glacier National Park August 25-31, 2024

Your tour of the Canadian Rockies features a drive along the incredible Icefields Parkway. Paralleling the Great Divide, this special roadway is home to some of the most dramatic vistas in all of North America. Here, snowcapped mountains engulf the landscape, casting shadows on the adjacent glacial streams. During the 1800s, fur traders used a similar route. The first roadway was built in the 1930s and the present parkway was completed by 1965. Highlighting your trip along the Icefields Parkway is a stop at the Athabasca Glacier, part of the Columbia Icefield - a dramatic 200 square mile stretch of land filled with glaciers. Here you may have an opportunity to ride across a 1,000-foot thick glacier or walk on the Columbia Icefield Skywalk.

Included in Price: Round Trip Air from Logan Intl Airport, Air Taxes and Fees/Surcharges, Hotel Transfers, Accommodations, 6 Breakfast, 1 Lunch and 3 Dinners. Cost from \$4,029 dbl pp **Deposit due before February 14, 2024, final payment June 24th.**

Highlights: Calgary, Head-Smashed-In Buffalo Jump, Waterton Lakes National Park, Glacier National Park, Going-to-the-Sun Road, Banff, Athabasca Glacier, Choice on Tour: Ice Explorer Glacier Tour or Columbia Icefield Skywalk, Lake Louise



*The Board of Education through the Culture on Wheels Program at New London Adult and Continuing Education, offers trips to promote educational and cultural opportunities to the citizens of this region. The Board of Education through the Culture on Wheels program serves as a booking agent only, has no responsibility for any aspects of the trip, its driver or operations including departure or arrivals, schedules, or any loss to person and/or property, however caused during a trip.

America's Music Cities September 8-15, 2024

Enjoy a finger-snapping, toe-tapping time on a tour of America's most famed musical cities – New Orleans, Memphis, and Nashville. Experience New Orleans, where jazz, food and fun are always on the menu. Explore New Orleans with a tour highlighting the city's musical history and influence. Spend 2 nights in Memphis, "birthplace of the blues." Choose how you explore Nashville highlights – with a chocolate-making lesson or a visit to the Johnny Cash Museum. Enjoy reserved seats at the Grand Ole Opry in Nashville. See where country legends recorded hit tunes at RCA Studio B. You'll be hummin' and strummin' long after you've returned home.

Highlights... French Quarter, Jazz Revue, Grammy Museum, Graceland, Civil Rights Tour, Ryman Auditorium, Grand Ole Opry Show, Country Music Hall of Fame, Historic RCA Studio B, Choice on Tour: Goo Goo Cluster Candy or Johnny Cash Museum

Included in Price: Round Trip Air from Logan Intl Airport, Air Taxes and Fees/Surcharges, Hotel Transfers, Accomdations, 7 Breakfasts, 1 Lunch & 3 Dinners. Cost from \$4,029 dbl pp **Deposit due before February 23, 2024, final payment July 10th.**



Discover Scotland September 29 - October 8, 2024

The tour begins in Glasgow, Scotland's Victorian city. Start your Scottish adventure... Travel to Oban, known as the 'Gateway to the Isles'.

Take a walk up to McCaig's Tower or visit Dunollie Museum, Castle, and Grounds. Travel on to Ballachulish - Isle of Skye – Ballachulish, also known in poetry and song as Eilean a' Cheò (The Misty Isle). Loch Ness is your next adventure...enjoy stunning and unspoiled landscapes as you journey further into the Highlands. Take a ferry ride to the Orkney Islands Grab your windbreaker – it's time for an adventure on the Orkney Islands. Ferry to this former Viking stronghold off the northernmost coast of Scotland. Travel to Inverness as you make your way back from the northern coast. Enjoy an overnight stay in Inverness, capital of the Highlands. Visit a family-run



farm set in the heart of the Highlands. See sheepdogs at work while surrounded by the mountain wilderness of Cairngorms National Park. Continue to Pitlochry for some time at leisure to explore on your own. End your day in Scotland's capital city of Edinburgh. Visit Edinburgh

Castle, home to the Scottish Crown Jewels. Leave Scotland with memories to cherish for a lifetime.

Highlights... Bagpipe Lesson, Isle of Skye, Loch Ness, Orkney Islands, Dunrobin Castle, Sheepdog Demonstration, Choice on Tour: McCaig's Tower or Dunollie Castle Museum, Edinburgh Castle, Scottish Cooking Experience.

Included in Price: Round Trip Air from Logan Intl Airport, Air Taxes and Fees/Surcharges, Hotel Transfers, Accomdations,

8 Breakfasts, & 6 Dinners. Cost from \$4,629 dbl pp **Deposit due before March 20, 2024, final payment July 20th.**

Spotlight on Tuscany March 26 - April 3, 2025

Your tour begins in the famous spa resort town of Montecatini Terme, nestled in the heart of Tuscany. Travel to Borgo a Mozzano, see the Ponte del Diavolo (Devil's Bridge) and the nearby remains of the Gothic Line – the Germans' last defense during WWII. Make your way to a Tuscan winery and learn about the art of winemaking. Next stop Florence... an extensive walking tour showcases the beautiful "Cradle of the Renaissance." Join a local Florentine guide and make your way through the city on foot. At the Piazza del Duomo, see the impressive Cathedral of Santa Maria del Fiore. On to Montecatini... learn more about Montecatini's history during a half-day guided walking or journey to Siena on a full day excursion and embark on a walking tour through its narrow Gothic streets. Get to know the local lifestyle in a contrada (neighborhood) whose community is centered around the

colorful Palio horse race. Pisa is your next stop, including the Piazza dei Miracoli, or "Field of Miracles". In Montecatini Terme, the day is yours to relax and experience the local flavor. Take this opportunity to shop at the local boutiques and dine at one of Montecatini's fine local restaurants. Tour San Gimignano, soak in breathtaking views as you travel to this hilltop village. Attend a Tuscan feast of traditional cuisine and wines set in the countryside. Italian memories to take home...

Highlights... Montecatini Terme, Lucca, Gothic Line, Winery Tour, Florence, Choice on Tour: Montecatini Walking Tour or Siena, Pisa, Cooking Class, Cheese Farm, San Gimignano

Included in Price: Round Trip Air from Logan Intl Airport, Air Taxes and Fees/Surcharges, Hotel Transfers, Accomdations, 7 Breakfasts, 4 Dinners. Cost from \$3,029 dbl pp **Deposit due before September 10, 2024, final payment January 20, 2025.**

Collette Presentations on America's Music Cities, Discover Scotland and Spotlight on Tuscany
January 9th 4:00 pm at NLAE Three Shaw's Cove

Save the Date

New London
Adult Education's
**2024 GOLF
TOURNAMENT**
will be
June 24, 2024
at Great Neck
Country Club.

*We look
forward
to seeing
you there!*



Our Secondary Lottery closes on January 30, 2024!
Visit newlondon.org/tours to join us at an **Informational Session/Campus Tour!** We can't wait to see you!

WWW.NEWLONDON.ORG

NEW LONDON PUBLIC SCHOOLS

CONNECTICUT'S 1ST ALL MAGNET DISTRICT!

"NLPS is home to 3 Elementary Magnet Schools, 1 Multi-Magnet Middle School Campus, and 1 High School Multi-Magnet Campus. Each school offers an innovative, hands-on approach to learning."



Apply Today



WWW.NEWLONDON.ORG/APPLY
134 WILLIAMS ST, NEW LONDON, CT 06320

New London Adult & Continuing Education

Three Shaw's Cove
New London, Connecticut 06320

Telephone (860) 437-2385
www.newlondonadulted.org

Non Profit Org.
US Postage
Paid
New London, CT
Permit No. 318



New London Adult Education students and staff walk the Black Heritage Trail.

GED Classes
ESOL Classes
High School Credit Diploma Classes

Enrichment Classes
Day Trips
Overnight Trips
National & International Fly Tours



Follow us on
Instagram



follow us on
facebook

New London

Adult & Continuing Education

SPRING/SUMMER 2024

Something
for Everyone

Serving and offering classes in New London, Groton, Lyme, Montville, Mystic, Old Lyme, and Waterford

Dear Friends:

New London Adult and Continuing Education is a truly unique place!



New London Adult and Continuing Education is a truly unique place!

We are very proud of our long-standing commitment to adult learners and dedication to providing innovative and stimulating educational opportunities for the community. New London Adult Education strives to strengthen partnerships and build connections to enhance programming that is responsive to the interests and needs of all learners.

A wide range of programs are offered. They include ESL classes to assist English language learners to improve their English language proficiency as well as CDP and GED classes for students looking to complete their high school education.

U.S. Citizenship classes prepare immigrants for the U.S. Citizen test. The Transitions Program assists our adult learners with career exploration, training, and college preparatory classes. The Integrated Basic Education and Skills Training Program offers workforce education in areas that match local demand. Counseling staff is available to guide and assist you in choosing the program that best meets your educational needs. Our Even Start – Two Generation program is a comprehensive family literacy program that serves the entire family through adult education, early childhood education, parenting education, interactive literacy, and home visits.

For those looking to travel, acquire new workforce skills, or pursue new interests or hobbies, our Continuing Education/Enrichment Program provides a vast array of programs and classes to satisfy your lifelong learning goals. We invite you to take advantage of the Culture-on-Wheels Program which presents stimulating, educational, and affordable travel opportunities. Numerous day, overnight bus trips, national flight tours, and international world-class travel are thoughtfully planned.

Visit our website, newlondonadulted.org, to become familiar with the multitude of programs and class offerings. Online registrations are accepted through our website for all Adult Academic and Enrichment programs.

We are excited to welcome you to our updated building and the programs that utilize our new space!

Please follow us on Facebook, and Instagram to stay connected and learn more about our unique program. There is truly something for everyone.

Sincerely,

Denise Spellman

Denise Spellman
Director

• **Inclement Weather:** When the New London Public Schools are closed due to inclement weather, Adult Education is also closed. Listen to a local radio station or watch your local television channels for cancellation notices. Should snow or inclement weather develop during the day, class cancellation is announced by late afternoon. Canceled classes are made up by adding additional sessions.

• **Fees:** If registering by mail, please enclose payment to ensure enrollment in the class/trip.

• **Residents:** Residents are those residing in the following towns: Groton, Lyme, Montville, New London, Oakdale, Old Lyme, Quaker Hill, Uncasville, and Waterford. Out of town residents add a \$5 non-resident fee. Some courses may require additional fees and/or materials. Check the course description for fee information.

• **Gift Certificates:** Certificates are available for any Adult Education course, trip, or special event. They may be purchased at any time at the New London Adult Education office between 9:00 a.m. and 4:00 p.m. This is a great gift for that hard-to-buy-for person in your life!

• **Refunds:** In the event of a filled class or cancellation, every attempt will be made to notify you in advance by email, mail or phone. Refund policy: A full refund is given only when NLAE cancels a course. No refunds at any time for computer courses, one-class courses or bus trips. Refunds for all other courses will be available with a minimum three-week notice prior to the course start date. There will be a \$10 processing fee for refunds. Credit for a future class or trip may be available in place of a monetary refund. Refunds will not be given after a course has started. Please allow at least one month for processing.

• **Returned Check Policy:** Participants will be charged \$50 for each check returned by the bank.

• **Student Regulations:** Smoking is prohibited on school property. Refreshments are not permitted in any classroom, hallway or lavatory. Parking is permitted only in designated areas. Cell phone use is not permitted in the classroom. Fire regulations and alarms must be heeded at all times.

• **Enrichment Course Confirmations:** Enrollment Confirmations will not be mailed, all confirmations will be emailed to the student.



Find our lighthouse, and you may win a prize

Find our lighthouse and be entered into a drawing for a \$50 NLAE gift certificate.

Email the page number and location to cherrickm@newlondon.org.

In the Subject line write Lighthouse. Two lucky winners will be selected.

(It is not the lighthouse on the registration form or logo. It is tucked away in the catalog)

Drawing Date is April 15th

Office Information

New London Adult Education

Three Shaw's Cove
New London, Connecticut 06320
Telephone (860) 437-2385
Fax (860) 437-6460
www.newlondonadulted.org

New London Office Hours

Monday-Friday: 8:00 am – 4:00 pm
Monday-Thursday: 6:00 pm – 9:00pm

• Waterford Information •

Waterford High School
20 Rope Ferry Road
Waterford, CT 06385
Direct all inquiries to: (860) 437-2385

• Lyme – Old Lyme Information •

Lyme – Old Lyme Middle School
53 Lyme Street
Old Lyme, CT 06371
Direct all inquiries to: (860) 437-2385

• Montville Information •

Montville High School
800 Old Colchester Road
Oakdale, CT 06370
Direct all inquiries to: (860) 437-2385

• Groton Information •

Fitch High School
101 Groton Long Point Road
Groton, CT 06340
Direct all inquiries to: (860) 437-2385

School Calendar Closing Dates

January 1..... New Years Day
January 15 Martin Luther King Jr Day
February 19-20 Presidents Day Break
March 29..... Good Friday
April 8-12..... April Break
May 27..... Memorial Day
June 19 Juneteenth

Program Start Dates

January 8, 2024

English for Speakers of Other Languages
Adult Basic Education and GED
Adult High School Credit Diploma
January 8 Phlebotomy
January 18..... EMT Training
January 18..... CNA Evening Training
February 10 Espanol Serv-Safe
March 2 Serv Safe Training
March 11 Real Estate
April 13..... Security Guard Card
April 17 Bartending
May 29..... CNA Training

Enrichment Classes begin
the week of March 11

Cover Photo/Catalog Design:
Peggy Cherrick & Ed Murphy

To err is human and we are...

We are not responsible for typographical errors.

Enrichment Class Registration Form

Mail completed form to:
 NLAE, Three Shaw's Cove, Suite 100
 New London, CT 06320

Name _____ Home Phone _____

Address _____ Cell Phone _____

City/State/Zip Code _____

Email Address _____

Do you want to be added to our email list? YES NO

CLASS #	CLASS NAME	CLASS LOCATION	COST
PAYMENT REQUIRED WITH REGISTRATION			Processing fee only when using a Credit Card - \$2.00
Method of Payment: _____ Visa _____ MasterCard _____ Discover _____ American Express			Total Due

Credit Card Number _____

Expiration Date _____ Security Code _____

CHECK ENCLOSED _____



NEW LONDON
 ADULT & CONTINUING EDUCATION



Use this QR Code to visit our website newlondonadulted.org and see the full descriptions of the classes and trips.

Culture on Wheels Trip Registration Form

Mail completed form to:
 NLAE, Three Shaw's Cove, Suite 100
 New London, CT 06320

Name _____ Home Phone _____

Address _____ Cell Phone _____

City/State/Zip Code _____

Email Address _____

Do you want to be added to our email list? YES NO

TRIP NAME	MEAL CHOICE - if required	COST
Processing fee only when using a Credit Card \$2.00		Total Due

Method of Payment:
 _____ Visa _____ MasterCard _____ Discover _____ American Express

Credit Card Number _____

Expiration Date _____ Security Code _____

Check Enclosed _____



NEW LONDON
 ADULT & CONTINUING EDUCATION